



Thursday, August 24, 2023

9:00 am - 12:00 pm

CDEC Office: 710 South Ash Street Denver, CO 80246

Google Hangouts: <https://meet.google.com/xzy-mmob-gqs>

Or by phone: 732-639-1054 PIN: 201 587 780#

[Meeting Materials](#)

[ECLC Strategic Plan and Work Plan](#)

## AGENDA

---

### Meeting Objectives:

- Approve the June 22, 2023 Meeting Minutes
  - Consider methods to advance the goals of the ECLC Strategic Plan
  - Vote on the endorsement of the refreshed *Early Childhood Colorado Framework*
  - Learn about the Statewide Needs Assessment findings and provide feedback on the Statewide Comprehensive Strategic Plan
  - Provide feedback to inform the completion of the Comprehensive Workforce Plan
  - Hear updates about the state of Early Childhood Councils and the work of ECCLA
  - Learn about the current campaign for Proposition ii and consider ways to support
  - Hear comments from the Early Childhood Community
- 

- |            |   |
|------------|---|
| 8:30-9:00  | Commissioners Breakfast (coffee and light breakfast provided for Commissioners)   |
| 9:00-9:10  | Welcome and Introductions <ul style="list-style-type: none"><li>• New Co-Chair: Adeeb Khan</li><li>• ACTION: Approve the June 22, 2023 Meeting Minutes</li></ul>  |
| 9:10-9:25  | Universal Preschool Update (Dawn Odean, CDEC)   |
| 9:25-9:35  | ECLC Strategic Plan Updates and Next Steps (ECLC Co-Chairs) <ul style="list-style-type: none"><li>• Type of Agenda Item: Discussion</li></ul>   |
| 9:35-10:00 | <i>Early Childhood Colorado Framework</i> Refresh Endorsement (Heather Craiglow and Maria Tarajano Rodman, ECLC, and Nicole Sharpe and Leila Sammander, School Readiness Consulting) <ul style="list-style-type: none"><li>• Type of Agenda Item: Official Vote Needed</li><li>• ECLC Function: Alignment</li><li>• <a href="#">Strategic Plan</a> A 1.3</li><li>• Pre-Work: Review newest draft of Framework (will be emailed Tuesday, 8/22)</li></ul> |

- 10:00-10:45 Statewide Needs Assessment and Comprehensive Strategic Plan (Emily Johnson, Colorado Health Institute and Tamilah Richardson and Rebecca Klein, Start Early)
  - Type of Agenda Item: Feedback Needed
  - ECLC Function: Alignment and Advocacy
  - [Strategic Plan](#) A 1.3
- 10:45-10:55 Break
- 10:55-11:05 Public Comment and Commissioner Updates
- 11:05-11:25 Comprehensive Workforce Plan Update (Kacee Miller, Angela Rothermel, Tanya Weinberg, Early Milestones)
  - Type of Agenda Item: Feedback Needed
  - ECLC Function: Alignment and Advocacy
  - [Strategic Plan](#) A 2.1.1
- 11:25-11:40 ECCLA Presentation (Maeghan Lokteff, ECCLA)
  - Type of Agenda Item: Informational
  - ECLC Function: Alignment
  - [Strategic Plan](#) A 1.1
- 11:40-11:55 Proposition ii Update (Jake Williams, Healthier Colorado)
  - Type of Agenda Item: Informational
  - ECLC Function: Advocacy
  - [Strategic Plan](#) S 1.4
- 11:55-12:00 Next Steps and Final Thoughts
- 12:00 pm Adjourn

### ECLC 2023 Meeting Schedule

- February 23, 2023
- April 27, 2023
- June 22, 2023
- August 24, 2023
- October 26, 2023
- December 21, 2023

*Note: Any presentation requested by the ECLC does not constitute or imply an endorsement of the product, process, service or organization by the ECLC.*

The next ECLC Meeting will be held virtually on October 26, 2023 from 9:00am to 12:00 pm. For information about future meeting dates, times and locations, visit [www.earlychildhoodcolorado.org](http://www.earlychildhoodcolorado.org).



# Early Childhood Leadership Commission June 2022, 2023 ~ 9:00am - 12:00pm

## MINUTES

### Meeting Objectives:

- Approve the April 27, 2023 Meeting Minutes
- Learn about recommendations for aligning CCCAP and UPK funding
- Learn about CDEC's process for developing policy and legislative priorities
- Provide feedback on the recommended changes to the *Early Childhood Colorado Framework*
- Hear updates on current ECLC projects and consider strategies for alignment
- Learn about early childhood efforts at state agencies and identify opportunities for collaboration
- Hear comments from the Early Childhood Community

---

**Attendees:** Happy Haynes, Floyd Cobb, Heather Craiglow, Jacob Williams, Jasmin Ramirez, Leslie Nichols, Lisa Roy, Lucinda Burns, Nicole Riehl, Pamela Harris, Rachel Hutson, Robert Werthwein, Sue Renner, Susan Steele, Whitney LeBoeuf

### Welcome and Introductions

Sue Renner called the meeting to order at 9:04. She asked for a motion to approve the April 27, 2023 meeting minutes. Whitney Leboeuf motioned to approve the minutes as drafted, Jake Williams seconded, and the minutes were approved unanimously.

### Colorado Department of Early Childhood Updates (Lisa Roy, Executive Director, CDEC) and Universal Preschool Program Updates (Dawn Odean, CDEC)

Dawn Odean explained that UPK providers will begin receiving payment in August based on the enrollment entered in Bridgecare. Payments will be made monthly and be based on enrollment adjustments. A commissioner asked if it will be an attendance based payment, and Dawn responded that it is based on enrollment rather than attendance. CDEC is working to determine funding based on what providers are offering, the number of children enrolled, qualifying factors, and funding available. Providers and families, including families who will qualify for additional hours, should know about how much funding they will receive by mid-July. They are also working on creating guidelines for blending and braiding funding with CCCAP and Head Start. Dawn also provided an update on the matching process, which is currently in round three. They are planning to move to a rolling basis soon. She also shared data on the first two rounds of matching: over 27,000 families have matched with 90% matched to a chosen provider. The program will result in \$165.7 million in savings for families during the first year.

A commissioner asked what is happening with the 10% of families who have not been matched yet. Dawn explained that there are several reasons for this, including duplicate applications, applications from families who have moved, families who signed up for programs that are no longer available. They are working with LCOs to reach out to any families who still need support with matching. Commissioners also asked how many providers are signed up, if the number of families aligns with expectations, and about county by county data. Dawn responded that we have nearly 2000 providers; that they expected around 50% of families to participate in the program during the first year, and they think they will surpass that by Fall; and they are working to analyze data by area and ensure that there are enough slots for families who may sign up in July and August.

Next, Mary Alice Cohen provided an overview of CDEC's newly released strategic plan. She shared the mission and vision of the Department, as well as the values. She also shared the seven goals included in the strategic plan, which include three goals describing the work CDEC must accomplish to achieve its mission

and four foundational goals that describe the work that CDEC must do in order to achieve the mission-driven goals. Commissioners asked if the plan was set or if it will evolve over time and suggested changing goal six from focusing on data to focusing on evidence. Mary Alice and Dr. Roy responded that it is a living document, and they are open to adjusting that language.

### **Colorado Child Care Assistance Program / Universal Preschool Program Alignment (Jesse Burne and Dawn Odean)**

Jesse Burne, Division of Early Learning Access and Quality Director, Colorado Department of Education, started by sharing definitions of blending funds and stacking/layering funds. He then explained the statutory and operational misalignment between UPK and CCCAP that CDEC. A work group was started to create opportunities for the discussions and joint problem solving between stakeholders and CDEC staff. Currently, the group is developing short and long term strategies for CCCAP and UPK alignment, as well as creating communication materials and hosting town halls with the counties. They plan to create a Guidance Tool Kit to provide short-term solutions which will be released in mid- to late-July. The work group is also considering long-term solutions, which may include rule or legislative strategies. Members of the work group include community advocates, county directors, CCCAP and UPK staff, and Federal partners. The work group started in March and has been meeting bi-weekly. Meetings are scheduled to continue well into September.

The work group has developed short term tasks and solutions to address the misalignment that will be implemented over the next 12 months. Counties will continue to conduct business as usual. However, there is going to be a transition period where the two funding streams might be blended resulting in child care providers receiving funds from both funding sources during the same time period. In an effort to work toward stacking, rather than blending, CDEC is in the process of updating the CCCAP application and redetermination forms to collect information on dually enrolled children and to simplify the application and form, which will be released through an operational memo and through CHATS. A commissioner asked why they want to move toward stacking. Jesse explained that the work group determined this by considering possible strategies and looking at what other states are doing. Stacking of funds will allow for the funding streams to be tracked separately. Another short term task is to support the creation of reports that integrate the UPK platform Bridgecare and the CCCAP program CHATS. Counties need these report to identify dually enrolled children and support their care needs. They will also provide training for counties, LCOs, and providers so that they are aware of how to pursue these strategies, identify needs, and align both UPK and CCCAP on behalf of dually enrolled children. In response to concern from the counties, the work group has also made determinations about the timing and order of the funding streams. The work group determined that UPK funds for part time enrollment would be first in toward the total cost of service needed. If additional UPK funds are available, qualifying children will be awarded additional funds. Then, CCCAP funds will be stacked on top of that.

The work group is also considering long term solutions, which can include policies and regulations to help align the two programs. There may need to be rule revisions to support alignment. They may also change payment practices, data sharing, and administrative and technology integration. They will continue to work with stakeholders to address their concerns, plan long term solutions, and provide training.

Commissioners raised concerns that we continue to work on simplifying the system and making it family friendly and that we may need to take more time to do this. Jesse responded that they are working toward a smoother, more simplified process but that they must work within federal regulations. The long term goals will simplify the process but it may take legislative action to do so. However, they also must have solutions that will work by the time UPK starts. Commissioners asked about the ideal state that we are working toward, especially in regard to family and provider experience and that we keep the true cost of care in mind when working on payment models. Jesse confirmed that they have a definition of true cost of care that they are working with. They are open to surveying families on their experience with the funding systems. Commissioners suggested changing the language of long-term goals and strategies to near term to

express that they are working on these solutions as quickly as possible and to consider how the funding solutions can align with the goals of raising compensation for the workforce.

#### **CDEC Policy and Legislative Updates (Grace Eckel, CDEC)**

Grace Eckel, Policy and Legislative Director at CDEC, explained the role of the Policy and Legislative Unit to advance policy, legislative, and fiscal initiatives that help achieve the Mission and Vision of CDEC. The unit operates in a cycle in alignment with the state legislative process. They are currently developing the Departments budget and legislative priorities. In July through November, they will work with the Governor's office to develop the Governor's budget request and legislative agenda, which is a confidential process. After that, they will work to advance priority legislation and track legislation related to early childhood during the session. After the session, they support program teams with implementation and advance rulemaking.

They are currently in the Budget and Legislative planning process for 2024-25. As part of this process, they met with more than 100 stakeholders. The process revealed consistent themes including workforce, infant-toddler care, embedding child care in affordable housing, user friendly data and technology, language justice, and universal preschool implementation. These themes inform the current work to develop budget and legislative concepts for submission to the Governor. The team looks forward to being able to come back in early November to share out what ultimately was included in the Governor's budget package.

#### **Early Childhood Colorado Framework Refresh Review and Feedback (Leila Sammänder and Nicole Sharpe, School Readiness Consulting)**

Leila Sammänder, School Readiness Consulting, explained the current status of the *Framework* refresh, which has included stakeholder engagement that reached over 600 stakeholders and a literature review, and are now ready to share the recommendations for an updated Framework.

Based on stakeholder feedback and a review of other state plans, they are recommending the following shifts: be clear about the purpose and audience; make the *Framework* highly graphic and accessible in multiples languages, formats, and platforms; highlight the importance of Early Childhood as grounding; keep vision clear, brief, and consistent; elevate clear set of foundational values for guiding the system; expand and better define core components; show interconnectedness and multitude of Early Childhood supports; update outcomes to ensure they reflect recent priorities of families and communities; embed equity as part of all actions and outcomes; and emphasize importance of coordination and alignment. Possibilities for the future include creating enhanced tools to support implementation; creating metrics aligned to the framework; and creating clear ownership for the *Framework* to create accountability and encourage use.

Susan Steele asked Commissions to consider whether the ECLC wants to support this expanded Framework. Heather Craiglow, who served as a co-chair on the Steering Committee for this work, emphasized that this work was done in partnership with many stakeholders who asked for these expanded definitions. Commissioners discussed the ECLC's role in advancing the Framework. Commissioners that it provides the Commission with a high level expression of our values; that they like that it provides definitions and lists the audience; and they like the Logic Model approach. Susan asked if it is clear enough that the Framework is centered on families. Heather Craiglow commented that this was a big piece of the conversation in creating the Framework and that the group wants the new Framework to better reflect family needs. She also pointed out that there was a greater effort to align the Framework with other state agencies and pointed out that we have added Economic Support as a domain. Commissioners discussed accountability for the Framework and metrics to measure success; they suggested that we use limited metrics and data that is already available; that it is the ECLC's role to make progress toward goals public; and that the Framework should include a definition for shared accountability. A commissioner suggested using the term well-being when describing health. Commissioners commented that the plan will be useful for common goal setting and as a tool for partners to use to consider how they are contributing and holding themselves accountable to shared goals.

Leila Sammander encouraged Commissioners to fill out a survey with more detailed feedback. SRC will complete continued engagement and incorporate feedback. At the August meeting, they will share final revisions and put it up for a vote to endorse.

### **State Agency Updates Questions & Answer (Susan Steele, ECLC co-chair)**

Written [state agency updates](#) were shared. Commissioners can email the state agency representatives with questions.

### **Public Comment and Commissioner Updates**

- There were no public comments.

### **Appreciation for Outgoing ECLC Member and Early Childhood Champions**

The ECLC honored the following Early Childhood Champions:

- Michael Cooke for her service as the Transition Director of the new Department since 2022. She worked to guide the transition and to establish the new UPK program.
- Dr. Katy Anthes for her seven years of service as the Commissioner of Education and particularly for her support of the establishment of the Department of Early Childhood.
- Outgoing Commissioner Sondra Ranum for her service to the ECLC as the representative of CDHE.

### **ECLC Project Updates (Shannon Wilson, ECLC Administrator)**

Shannon Wilson provided updates on ECLC Projects:

- The 2022 annual report will be released soon. A draft of the report will be forwarded to commissions and contributors for review. Once the final version is released, Commissioners should share it with their networks.
- The ECLC Strategic Plan was finalized in April. It has now been shared with Subcommittees and Working Groups and will be used for charter revisions. While sharing with stakeholders, it was pointed out that some of the language was not inclusive of all aspects of the early childhood system.
  - Shannon proposed changing “early childhood care and education” to “early childhood supports and services.” Commissioners proposed changing to “early childhood care, education, and supports.” The change was accepted with an understanding that the language will be revisited after the *Early Childhood Colorado Framework* is completed.
- An effort to update and rebrand the Comprehensive Statewide Strategic Plan (formerly Colorado Shines Brighter) has begun. The new plan will respond to this year’s statewide needs assessment and will be aligned with the refreshed *Early Childhood Colorado Framework*. The Commission will vote to endorse the plan in December. Members who are interested in serving on the Working Group can email Shannon.
- ECLC is also advising on the update of the Workforce 2020 plan in conjunction with Early Milestones and the CDEC Workforce team. Listening sessions and Stakeholder Feedback sessions have been completed, and the plan is now being drafted. The ECLC will vote to endorse this plan in December. Commissioners can contact Kacee Miller or Tanya Weinberg from Early Milestones with questions.

### **Co-Chairs’ Next Steps and Final Thoughts**

Susan Steele thanked everyone for attending and participating. The next meeting will be held in person, August 24, 2023. The meeting was adjourned at 11: 58 pm.

---

*Note: Any presentation requested by the ECLC does not constitute or imply an endorsement of the product, process, service, or organization by the ECLC.*

Thank you for joining! We will begin shortly.

# ECLC

*Early Childhood Leadership Commission*

August 24, 2023

9:00 am - 12:00 pm

CDEC Office and Google Meet

In-Person WiFi: publicwifi

- Please remember to mute your computer or phone when not speaking ●
  - We will be recording the meeting ●
- All materials can be found at: [www.earlychildhoodcolorado.org/ecclc-meeting-information](http://www.earlychildhoodcolorado.org/ecclc-meeting-information) ●

# Meeting Logistics

## In-person attendees

- If logged into Google, mute yourself and your computer
- The OWL will track your voice
- Be prepared to access digital documents throughout the meeting
- Try to limit side conversations or talking at the same time as someone else

## Virtual attendees

- Keep microphone muted until speaking
- Turn camera on when speaking (you are welcome to leave camera on the full time)
- For questions or comments
  - Use the hand raise feature
  - Unmute
  - Type in chat





# Welcome, Introductions & Approve Minutes

# Meeting Objectives

- Approve the June 22, 2023 Meeting Minutes
- Consider methods to advance the goals of the ECLC Strategic Plan
- Vote on the endorsement of the refreshed *Early Childhood Colorado Framework*
- Learn about the Statewide Needs Assessment findings and provide feedback on the Statewide Comprehensive Strategic Plan
- Provide feedback to inform the completion of the Comprehensive Workforce Plan
- Hear updates about the state of Early Childhood Councils and the work of ECCLA
- Learn about the current campaign for Proposition ii and consider ways to support
- Hear comments from the Early Childhood Community



# Universal Preschool Updates

Dawn Odean, CDEC



# ECLC Strategic Plan Updates and Next Step

# 10-Year Strategic Plan

**Vision: All children are valued, healthy and thriving**

## Guiding Principles & Functions

From its unique position as the federally authorized state advisory council on early childhood....



## Strategies

...the ECLC focuses its time, energy, and resources to influence systems and policy advancements.....

- Center family experience, satisfaction, and need, ensuring responsive and accessible service delivery
  - Create a public forum to examine challenges and barriers to an equitable, comprehensive early childhood system and identify creative solutions
  - Request data needed from public and private partners to inform strategic policy recommendations
  - Develop and promote innovative policy change to strengthen Colorado's statewide mixed delivery system, increasing access to affordable, quality care
  - Monitor and provide feedback on state agency strategic plans and priorities to promote alignment, mutual reinforcement, and interagency partnerships
- 
- Develop policy strategies for stronger recruitment and retention, increasing workforce diversity across all leadership levels
  - Champion strategies to enhance early childhood workforce compensation across public and private settings
  - Advocate for the public and private funding needed to fully implement Colorado's Comprehensive Early Childhood Workforce Plan
  - Regularly review workforce data to advise on new opportunities and any course corrections
- 
- Advocate for and monitor progress on a multi-agency integrated early childhood data system
  - Inform and support the use of a data-driven evaluation and learning approach so state initiatives are designed with accountability measures and a plan to evaluate impact
  - Promote collaborative, interagency, multi-year fiscal planning for early childhood
  - Set the direction for fiscal policies and decisions that prioritize children and families across public and private systems

## Results

...so that Colorado achieves its vision for early childhood.



Colorado is successful in administering a system of comprehensive early childhood care, education, and supports so that *all families can easily identify, navigate and access services for their children.*



Colorado recruits, retains, and equitably compensates a diverse and qualified early childhood workforce that *provides quality care, education, and supports to children and their families.*



Colorado's early childhood system has the data needed to make evidence-based decisions and the funding resources to put best practices and plans into place, so *all communities have what is needed to best support children and families.*

**Levers of Change:** The ECLC aims to increase access to data, enhance financing, and inform policies by utilizing a variety of public and private resources, such as:

- Family, provider, and community voice
- Federal, state and local public investments
- State agency plans, goals and budgets
- National best practices
- State early childhood plans and roadmaps
- Private investments
- Service and program data
- Workforce data

## ECLC Work Plan: 2023-2025 Activities and Milestones



**Result 1:** Colorado is successful in administering a system of comprehensive early childhood care, education, and supports so that *all families can easily identify, navigate and access services for their children.*

### Strategies (5-10 years)

- S1.1- Center family experience, satisfaction, and need, ensuring responsive and accessible service delivery
- S1.2- Create a public forum to examine challenges and barriers to an equitable, comprehensive early childhood system and identify creative solutions
- S1.3- Request data needed from public and private partners to inform strategic policy recommendations
- S1.4- Develop and promote innovative policy change to strengthen Colorado's statewide mixed delivery system, increasing access to affordable and quality care
- S1.5- Monitor and provide feedback on state agency strategic plans and priorities to promote alignment, mutual reinforcement, and interagency partnerships

### Activities and Milestones (2-3 years)

- A1.1- Regularly connect with existing early childhood forums to gather family and provider experience, satisfaction, and need so policy recommendations are informed by on-the-ground experiences (e.g. FFN Advisory Council, CDEC Family Voice Council)
- A1.2- By Spring 2024, identify existing family satisfaction and engagement surveys to bring that data forward to inform ECLC committees and work groups (e.g. PDG Family Survey, CO Child Health Survey)
- A1.3- Annually review relevant early childhood plans and progress to identify policy and system change recommendations (e.g. UPK, ECCS, PDG)
  - A1.3.1- Annually elevate innovative policy strategies that support statewide access to high quality early childhood services, including FFN
  - A1.3.2- By spring 2024, provide guidance and recommendations to inform the universal preschool quality standards development
- A1.4- Review and provide feedback on new state plans as they are being developed
- A1.5- By January 2024, create a process to request and review state agency plans and goals related to children and families
  - A1.5.1- Elevate recommendations for increased alignment across state agency plans and goals on a regular basis
- A1.6- Each summer/fall, work with Early Childhood and School Readiness Legislative Commission to align early childhood policy agendas
- A1.7- Annually review CDEC's legislatively required Transition Report and provide guidance and recommendations to ensure progress towards a comprehensive, equitable early childhood system of supports and services.

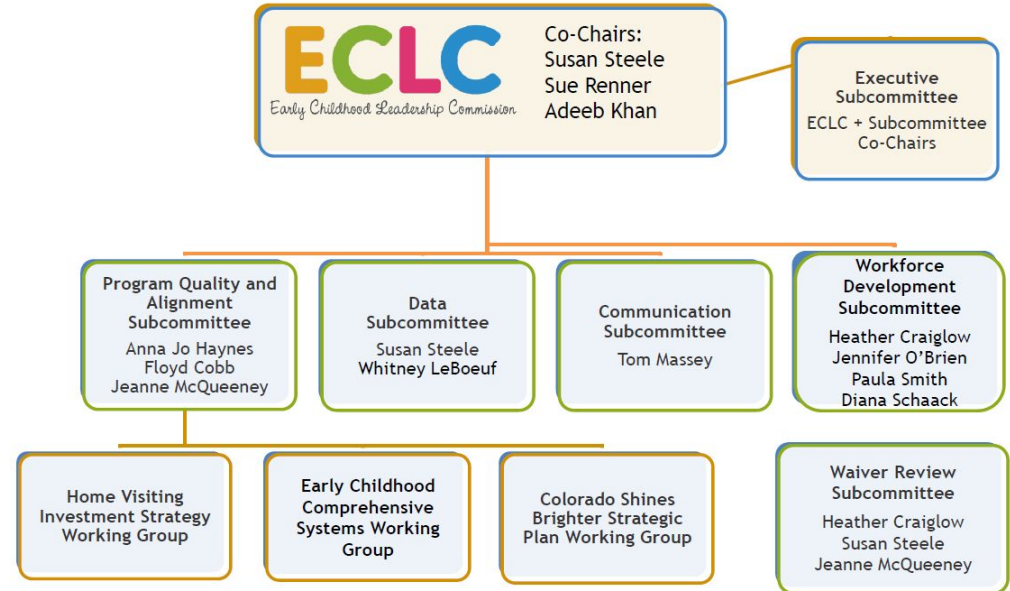
### Outputs: Progress Measures

- Aligned state agency SMART/WIGs related to young children and families
- Annual policy recommendations generated
- Surveys and information, such as family satisfaction and engagement, collected through partner and state data efforts

See full  
Work Plan  
[Here](#)

# Strategic Plan and Subcommittees

- Review this [document](#)
- Are the committees are appropriately assigned?
- Could we be better accomplish our goals with different subcommittees?



# Communication Subcommittee

- Based on the Strategic Plan, we will be sunsetting the Communications subcommittee
- Subcommittees should consider how to incorporate communications into their work

Thank you to everyone who has served on the  
Communications Subcommittee!



# Next Steps

- Subcommittees will be reviewing and proposing changes to their charters
- At the October meeting, Commissioners will:
  - Approve the new charters
  - Decide on the need for new Subcommittees



*Early Childhood Colorado Framework* Refresh Endorsement

Heather Craiglow and Maria Tarajano Rodman, ECLC

Nicole Sharpe, School Readiness Consulting

WELCOME ECLC COMMISSIONERS!

# EARLY CHILDHOOD COLORADO FRAMEWORK REFRESH



# FROM A PROCESS STANDPOINT

October 2022-September 2023

## START

Oct 2022-Sept 2023

Through Sept 2023

Through April 2023

Jan-April 2023



May-July 2023

July-Sept 2023

September 2023



**ECLC Endorsement**

**FINISH**

# FROM A PARTNER ENGAGEMENT STANDPOINT

AS A RESULT OF SUPPORT FROM ECLC AND THE STEERING COMMITTEE...

## 602 PEOPLE

*throughout the state provided their ideas, feedback  
and insights to inform Framework updates*

340  
COMPLETED  
THE SURVEY

256  
ATTENDED  
LISTENING  
SESSIONS

11  
PARTICIPATED  
IN 1:1 CHATS

*Count as of 5/21*





# HONING THE UPDATES

We've worked alongside partners across the state to hone in final shifts to the *Framework*.

- ECLC Co-Chairs
- ECLC Commissioners
- Family Voice Council
- ECCLA
- Program Quality and Alignment Subcommittee
- ECCS
- CDEC Leadership Team

# GROUNDING IN THE VISION FOR THE FRAMEWORK

- **A shared vision for Colorado** to promote action and dialogue about the future of children across the state.
- **A tool designed by and for the community** to read, consider, and use.
- **An iterative and living document** that is meant to capture the best thinking of the time and be **responsive to the current context.**

**It is meant to be nimble, iterative, and constantly evolving to improve.**

# THE EARLY CHILDHOOD COLORADO FRAMEWORK

If **WE BELIEVE**



## ★ PRINCIPLES

Equity Driven

### ALL CHILDREN SERVED

• CHILD, FAMILY, AND COMMUNITY CENTERED

• HOLISTIC SERVICES APPROACH

• THRIVING, EFFECTIVE WORKFORCE

• MIXED DELIVERY SYSTEM

• HIGH QUALITY STANDARDS

• INNOVATION

• STREAMLINED EFFICIENCY

• DATA-DRIVEN, OUTCOMES-FOCUSED DECISIONS

• ACCOUNTABILITY

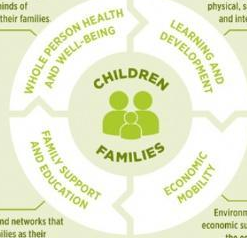
And **BUILD A STRONG SYSTEM**



## ★ EARLY CHILDHOOD SYSTEM

Comprehensive services to fully support the healthy bodies and minds of children and their families.

Early care and education that nurtures children's physical, social-emotional, and intellectual growth.



Resources and networks that support families as their child's first caregiver and most important teacher.

Environment that fosters economic success so that all the essential needs of children, families, and the workforce are met.

### WORKFORCE

Early childhood professionals who are diverse, equitably compensated, and prepared to serve in the many settings involved in child health, development, and education.

### LEADERSHIP

A strong underlying network of leaders to make timely and responsive decisions about programs and policies.

### FUNDING

Abundant resources to fully meet the needs of children, families, and communities.

### DATA & RESEARCH

Information to better understand the early childhood system and plan future actions that lead to improved, sustainable, and more equitable outcomes.

### Collaboration

All elements working together—in local communities to the state level—toward a shared vision for all of Colorado's young children.

It **WILL LEAD TO**



## ★ OUTCOMES



### Access

All children and families have access to a range of early childhood services that are culturally relevant, meet their needs and preferences, and are equitably allocated and available.



### Quality

Every young child and family experiences a high-quality environment that supports all areas of well-being, affirms all aspects of their identity, and leads to equitable opportunities.



### Alignment

All the components of the early childhood system are aligned and coordinated so families are able to easily identify, navigate, and receive services.

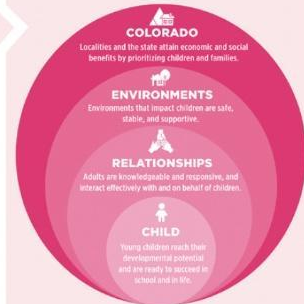
The **FUTURE OF COLORADO**



## ★ VISION

**ALL CHILDREN ARE VALUED, HEALTHY, AND THRIVING**

## ★ IMPACT



CHECK OUT THE UPDATED FRAMEWORK!



# BIG SHIFTS WE ARE EXCITED ABOUT



Added a domain focused on **Economic Mobility** to represent focus on children and families



Aligned with and defined each of the **Guiding Principles** used by ECLC, with core principle of **equity**



Expanded domain to focus on **Whole Person Health and Well-being**



**Elevating the workforce** as an added component of the early childhood system

# WHAT'S AHEAD



## IMMEDIATE NEXT STEPS

- Draft communication materials to support sharing and dissemination
- Touchpoint with Steering Team in September

## NEAR FUTURE NEXT STEPS

- Releasing the refreshed *Framework* and communication tools in September
- Sharing posters of the updated *Framework* for display and use
- Providing details regarding "official" dissemination and guidance for implementation

# THE EARLY CHILDHOOD COLORADO FRAMEWORK

## If WE BELIEVE



### ★ PRINCIPLES

#### Equity Driven

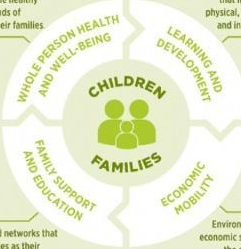
- ALL CHILDREN SERVED
- 
- CHILD, FAMILY, AND COMMUNITY CENTERED
- 
- HOLISTIC SERVICES APPROACH
- 
- THRIVING, EFFECTIVE WORKFORCE
- 
- MIXED DELIVERY SYSTEM
- 
- HIGH QUALITY STANDARDS
- 
- INNOVATION
- 
- STREAMLINED EFFICIENCY
- 
- DATA-DRIVEN, OUTCOMES-FOCUSED DECISIONS
- 
- ACCOUNTABILITY

## And BUILD A STRONG SYSTEM



### ★ EARLY CHILDHOOD SYSTEM

Comprehensive services to fully support the healthy bodies and minds of children and their families.



Early care and education that nurtures children's physical, social-emotional, and intellectual growth.

Resources and networks that support families as their child's first caregiver and most important teacher.

Environment that fosters economic success so that all the essential needs of children, families, and the workforce are met.

#### WORKFORCE

Early childhood professionals who are diverse, equitably compensated, and prepared to serve in the many settings involved in child health, development, and education.

#### LEADERSHIP

A strong underlying network of leaders to make timely and responsive decisions about programs and policies.

#### FUNDING

Abundant resources to fully meet the needs of children, families, and communities.

#### DATA & RESEARCH

Information to better understand the early childhood system and plan future actions that lead to improved, sustainable, and more equitable outcomes.

#### Collaboration

All elements working together—in local communities to the state level—toward a shared vision for all of Colorado's young children.

## It WILL LEAD TO



### ★ OUTCOMES



#### Access

All children and families have access to a range of early childhood services that are culturally relevant, meet their needs and preferences, and are equitably allocated and available.



#### Quality

Every young child and family experiences a high-quality environment that supports all areas of well-being, affirms all aspects of their identity, and leads to equitable opportunities.



#### Alignment

All the components of the early childhood system are aligned and coordinated so families are able to easily identify, navigate, and receive services.

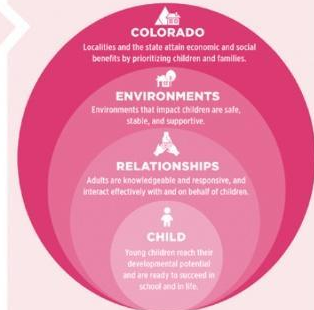
## The FUTURE OF COLORADO



### ★ VISION

ALL CHILDREN ARE VALUED, HEALTHY, AND THRIVING

### ★ IMPACT



SEEKING  
ENDORSEMENT  
FOR THE  
REFRESHED EARLY  
CHILDHOOD  
COLORADO  
FRAMEWORK



# Statewide Needs Assessment and Comprehensive Strategic Plan

Emily Johnson, Colorado Health Institute

Tamilah Richardson and Rebecca Klein, Start Early

# Colorado B-5 Needs Assessment

Initial Findings Overview



**August 24, 2023**

# Research Questions

1. How available are early childhood programs in Colorado, and how does this vary across select family contexts?
2. What are barriers to early childhood program availability and options to address them?
3. What is the general quality of early childhood programs in Colorado, and how does this vary across select family contexts?
4. What are barriers to early childhood program quality and options to address them?
5. How can early childhood programs remain sustainable, both in general and in light of the impact of COVID-19?
6. What are the most effective methods for engaging families in the early childhood system, and how does this vary across select family contexts?
7. What barriers and opportunities are there for better recruitment and retention of the early childhood workforce?

# Early Childhood System

- **Efforts to foster well-being** such as Early Childhood Mental Health Consultation and The Incredible Years
- **Family strengthening efforts** such as Family Resource Centers, HealthySteps for Young Children, Home Instruction for Parents of Preschool Youngsters, Nurse-Family Partnership, Parents as Teachers, Promoting Safe and Stable Families, SafeCare Colorado, and Child First
- **Early care and education programs** such as licensed child care, informal early care and education, Colorado Shines, Head Start, Colorado Child Care Assistance Program, Early Childhood At-Risk Enhancement, the Individuals with Disabilities Education Act Part B preschool special education, and Universal Preschool Colorado
- **Early Intervention Colorado**



Initial Findings



# Select Family Contexts



**Cultural and linguistic considerations.** Families of different cultural backgrounds, families and children whose primary language is not English, immigrant families.



**Behavioral and physical health considerations.** Children with special health needs, children with behavioral or social-emotional needs.







**Resource considerations.** Families in rural areas, families in high poverty areas or other underserved family and child populations, families experiencing homelessness.



**Families with infants and toddlers.**

# Availability

- Families need child care at all hours. 
- Many child care providers are not participating in UPK, yet those that are hold the majority of preschool-aged licensed capacity.
- The greatest need for child care is among families with infants and toddlers. 
- The early childhood system does not adequately meet the needs of families that prefer or only speak a language other than English or Spanish. 
- The early childhood system is not adequately meeting the needs of families with children with special health needs; however, more data are needed to understand the extent of this problem. 




# Quality

- Most child care providers do not participate in Colorado Shines.
- Families view quality as important, but they do not use quality ratings to make decisions about child care.
- Early childhood programming should focus on more than just “school-readiness” and emphasize a whole-child approach.


# Sustainability

- Programs across the early childhood system need more alignment across funding streams and opportunities to secure and combine funding.
- Providers spent two-thirds of stabilization grant funding on personnel costs, highlighting an ongoing need for basic operational funding.
- Informal care providers need additional support and funding.

# Family Engagement

- Hand-offs within and adjacent to the early childhood system are opportunities to increase program participation.  
- Programs should use two-generation, whole family approach to effectively engage families.
- Services need to use tailored approaches to reach families facing language and cultural barriers. 

# Workforce

- Across the system, the early childhood workforce needs increased compensation and benefits
- The early childhood workforce needs more funding and time to dedicate to professional development
- Trainings should equip the early childhood workforce to provide trauma-informed, culturally-responsive care to all children 



# Initial Findings: Discussion



Consulting

8/24/23

# Colorado Early Childhood System Strategic Planning

Early Childhood Leadership Commission Meeting





# Agenda

- Introduction
- Strategic plan process overview and discussion of alignment with Early Childhood Colorado Framework
- Brainstorming strategies based on initial Needs Assessment findings
- Closing/Next Steps

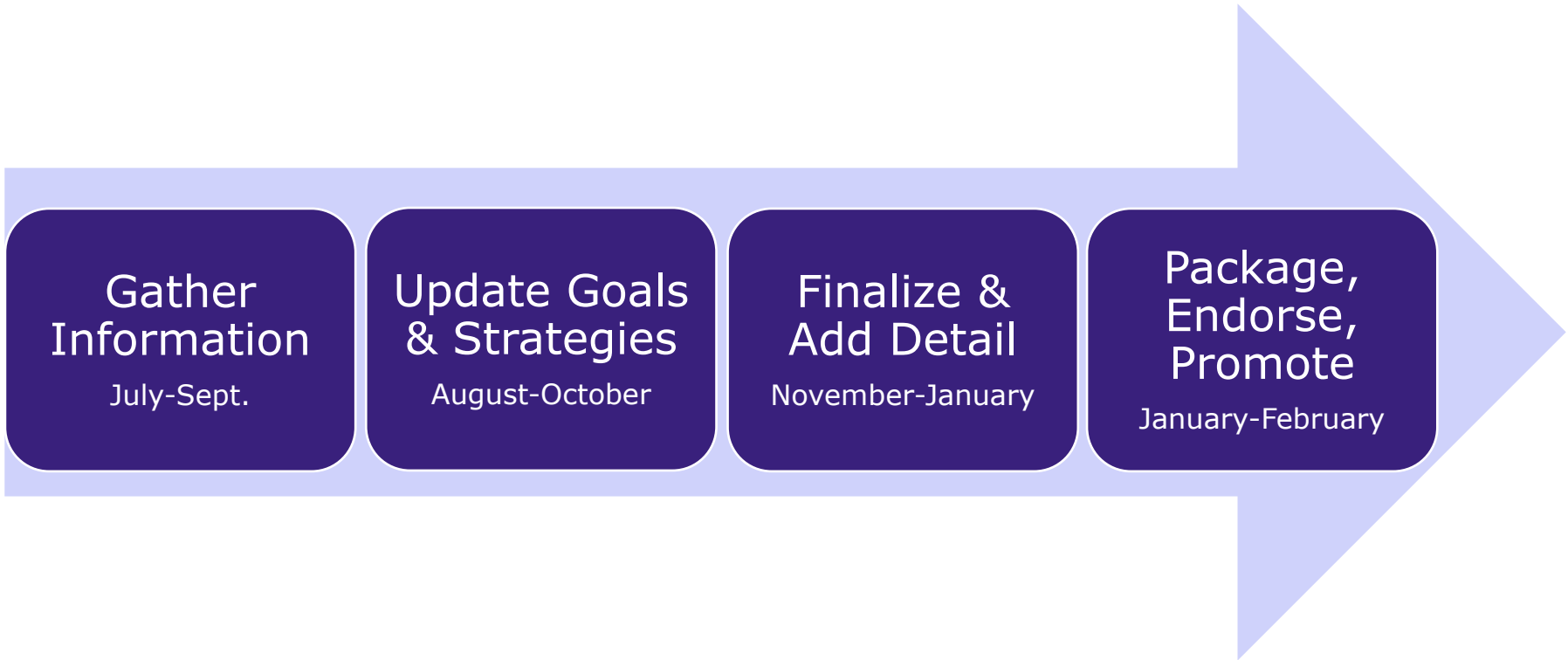
# Who We Are: Champions of Early Childhood



# Purpose of Updating Strategic Plan

- To reflect progress that has been made since the original drafting of the strategic plan
- To build on new needs assessment
- To better integrate equity in the strategic plan
- To expand the scope from birth-to-five to prenatal-to-five and to include other sectors beyond but related to early care and education
- To integrate goals and strategies from the broad array of CO plans related to early childhood that currently exist – the “plan of plans” - and to align with the new Early Childhood Colorado framework

# Overview of Strategy Development Process



# Overview of Strategy Development Process: Phase 1



## Gather Information

Jul – Sept.

### Activities

- Map out strategy development process
- Convene Strategic Planning Working Group
- Review needs assessment, evaluation, new EC system framework, etc.
- Review relevant early childhood strategic plans and draft themes document
- Engage partners
  - Gather information about progress of current strategies and ideas for new ones
  - Facilitate partner discussions/collect direct feedback
  - Aggregate and analyze input

# Partner Engagement Activities



- Community conversations (~12)
  - e.g., Family Voice Council, subcommittees of the ECLC, Early Childhood Council Leadership Association, etc.
- Focus groups with families and early childhood professionals
  - (8 focus groups with ~10 ppl each, 2 in Spanish, and interpretation for other languages)
- Key Informant Interviews (~20)
- Survey to families and professionals to confirm and prioritize emerging ideas and strategies (translated into Spanish)

40

# Overview of Strategy Development Process: Phase 2



## Update Goals & Strategies

Aug. - October

### Activities

- Draft Strategic Plan At-A-Glance goals, objectives, strategies
- Draft Key Performance Indicators (KPIs)
- Work with graphic designer on refreshed Strategic Plan title, tagline, brand colors/design elements for Strategic Plan At-A-Glance and Report

# Overview of Strategy Development Process: Phase 3



## Finalize & Add Detail

Nov. – Jan.

### Activities

- Incorporate ECLC, FVC, CDEC leaders, community and other feedback into draft Strategic Plan At-A-Glance
- Confirm Key Performance Indicators (KPIs) for Strategic Plan and process for managing progress on strategic plan using KPIs
- Confirm branding
- Draft Strategic Plan Report (includes description of process, rationale)



# Overview of Strategy Development Process: Phase 4



Package,  
Endorse,  
Promote

January-February

## Activities

- Translate Strategic Plan At-A-Glance and Report into Spanish
- Complete graphic design
- Draft partner register, promotion plan, and promotional deliverables

# Touchpoints with the ECLC



# Strategic Planning Process Reflections

## **What are your thoughts and suggestions for Colorado's strategic planning process?**

- Are there any important considerations to note and discuss?
- Thoughts on aligning the Strategic Plan to the Early Childhood Colorado Framework?

# Strategy Ideas



- What are your ideas to strengthen the CO Early Childhood System and to address the initial Needs Assessment findings that you heard about today?
  - Availability
  - Quality
  - Sustainability
  - Family Engagement
  - Workforce
- Please share your ideas aloud, in chat or in the [JamBoard!](#)

# Current Strategy Updates

- We are also gathering input about:
  - the status of current CO Shines Brighter Strategies
    - (not yet started, in progress, completed, discontinued)
  - whether to carry them forward into the new comprehensive CO Early Childhood System Strategic Plan
    - (remove from new plan, keep as is, keep with light changes, major changes are needed)
  - recommendations for updating, changing or adding to the strategy
    - (specific language or wording changes)

You may share your knowledge and recommendations in [this Google sheet!](#)

# Closing/Next Steps

- Continue to share your feedback and ideas on the [Jamboard](#)
- Contribute your thoughts and recommendations on the current CO Shines Brighter Strategies in the [Google sheet](#)
- Reach out to us directly with comments, questions, or other contributions!
- Please support our partner engagement efforts
- Look forward to draft Strategic Plan At-A-Glance in October!



Every child has equitable opportunity to reach their full potential to thrive in school and in life.

[StartEarly.org/Consulting](https://www.startearly.org/Consulting)

Find [startearlyorg](https://www.startearly.org) on: [!\[\]\(feabb98897b440bc8695a03336a6e2df\_img.jpg\)](#) [!\[\]\(c7f935293d8062fa748ed86b74d28761\_img.jpg\)](#) [!\[\]\(7fb6629225c12ebb64040d8c4514d4ad\_img.jpg\)](#) [!\[\]\(b212b60c262469e8f45d74900bdab300\_img.jpg\)](#)

[rklein@startearly.org](mailto:rklein@startearly.org)

[trichardson@startearly.org](mailto:trichardson@startearly.org)

[sbeilmann@startearly.org](mailto:sbeilmann@startearly.org)

[kfisher@startearly.org](mailto:kfisher@startearly.org)

A decorative background consisting of a solid orange color with a pattern of white-outlined, overlapping triangles. The triangles are arranged in a grid-like fashion, with some pointing up and some pointing down, creating a complex geometric design.

**Break Time!**  
*Back in 10 minutes...*





# Public Comment and Commissioner Updates



# Comprehensive Workforce Plan Update

Kacee Miller, Angela Rothermel, Tanya Weinberg, Early Milestones

# Colorado's Comprehensive Early Childhood Workforce Plan

---

*Early Childhood Leadership Commission  
August 24, 2023*



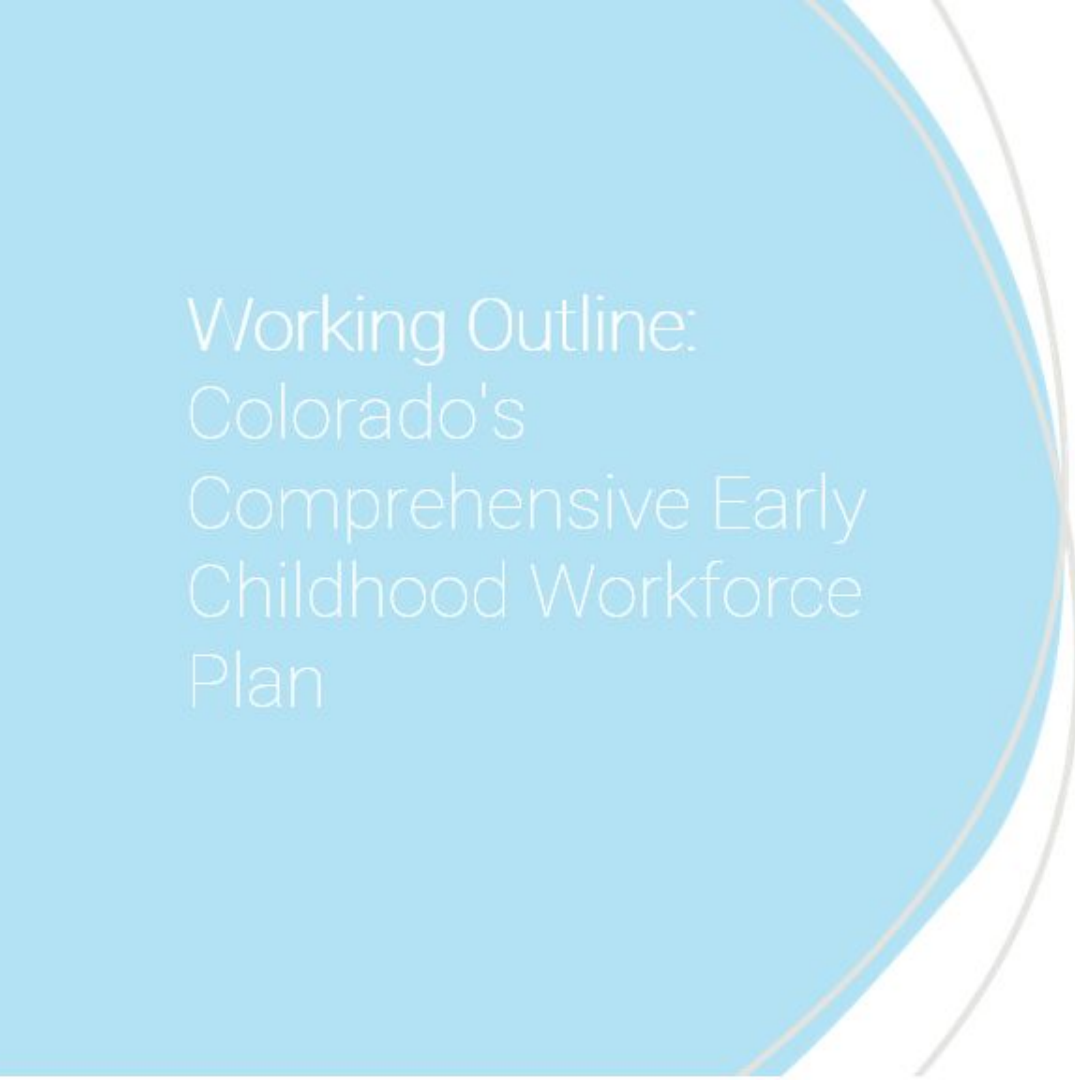
**EARLY MILESTONES**  
COLORADO

## WHO IS THE COMPREHENSIVE EARLY CHILDHOOD WORKFORCE?

In early childhood, children's development is rapid and multi-faceted. **Supporting the health, development, and education, of Colorado's young children and their families from pregnancy through age eight takes a rich, diverse ecosystem of professionals with a range of specialized knowledge, skills, and expertise.** This comprehensive workforce spans multiple disciplines, sectors, and roles, and encompasses a range of backgrounds, lived experiences, and professional pathways.

Every day, across Colorado, **this workforce, including home visitors, mental health providers, classroom teachers, family child care home providers, early interventionists, and other professionals,** is delivering an essential public good in partnership with communities and caregivers of young children.

Understanding the constellation of **considerations and opportunities that are common across this comprehensive workforce – and the unique dynamics specific to certain roles and sectors** – is key to building a robust, responsive early childhood system that ensures all Colorado children, families, and early childhood professionals are valued, healthy, and thriving.



Working Outline:  
Colorado's  
Comprehensive Early  
Childhood Workforce  
Plan

**INTRODUCTION**

**PROGRESS & HISTORY**

**WHAT'S INCLUDED IN  
COMPREHENSIVE**

**RELATED PLANS, FRAMEWORKS &  
EFFORTS**

**SECTOR-SPECIFIC 2-PAGERS**

**ANCHOR THEME SECTIONS**

**TOOLS**

**APPENDIX**

## SECTOR-SPECIFIC 2-PAGERS

---

- Early Intervention Specialists (ECSE, OT, PT, SLP)
- Infant and Early Childhood Mental Health
- Home Visitors
- Teaching Roles
- Center Directors
- Family Child Care Home Providers
- Family Friend and Neighbor Providers
- Coaches and Trainers



## ANCHOR THEME SECTIONS

---

- Recruitment and Career Pathways
- Retention and Wellness
- Compensation and Finance
- System Learning and Leadership



# Questions

---

**Tanya Weinberg**

Portfolio Director, Health and Well-being

**EMAIL:** [tweinberg@earlymilestones.org](mailto:tweinberg@earlymilestones.org)

**Kacee Miller**

Portfolio Director, Early Learning

**EMAIL:** [kmiller@earlymilestones.org](mailto:kmiller@earlymilestones.org)



# THANK YOU



EARLY **MILESTONES**  
COLORADO

EARLYMILESTONES.ORG | 720.639.9000 | INFO@EARLYMILESTONES.ORG



# ECCLA Presentation

Maegan Lokteff, ECCLA

# The Early Childhood Council System



EARLY CHILDHOOD COUNCIL  
LEADERSHIP ALLIANCE

A wooden signpost is mounted on a tree trunk. The signpost is made of light-colored wood and has the word "COLORADO" written on it in large, dark, bold, sans-serif capital letters. The background shows a clear blue sky and a blurred landscape.



# What is an Early Childhood Council?

Early Childhood Councils were originally in statute in HB 07-1062, and now in HB 22-1295, with the purpose to improve and sustain the availability, accessibility, capacity, and quality of early childhood services for children and families throughout the state.

Early Childhood Councils serve as the hub for local early childhood services, “connecting the dots” between agencies and service providers, coordinating needs assessments and strategic plans to ensure services meet local needs, supporting professionals and families, and bringing resources to their communities.



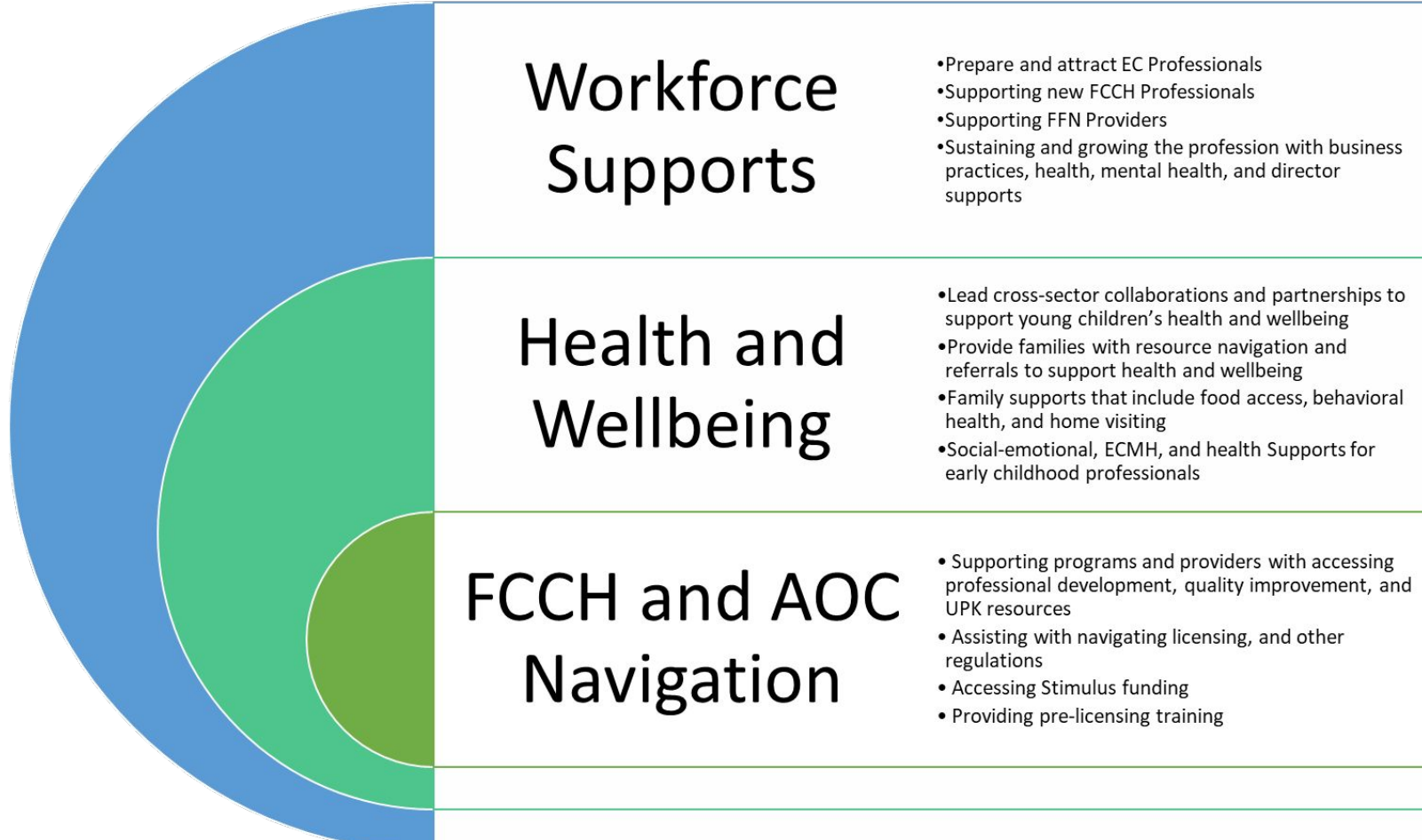


- 17 Early Childhood Councils are also designated Child Care Resource and Referral Catchments and work closely with the Early Childhood Council Counterparts to deliver services.
- 27 Early Childhood Councils are also designated Local Coordinating Organizations, with two Early Childhood Councils supporting LCO work in 6 Early Childhood Catchment areas.
- One Early Childhood Council is also a designated Family Resource Center by FRCA, and two serve as Family Resource Centers in their communities.
- 12 Early Childhood Councils have contracts or receive other funding to provide Early Childhood Mental Health Consulting in their catchment area

## The Core Functions of Early Childhood Councils

	Partnerships and Engagement	Capacity Building and Sustainability	Advocacy and Policy Development	Professional Development and Leadership	Grant and Fiscal Management
Defined as	<i>Convening community partners to share information and resources, identify issues, and problem solve; while advancing robust public engagement to elevate early childhood issues.</i>	<i>Providing continuous community-wide assessment, strategic planning, data collection, and monitoring to build and sustain local capacity for improvement of early childhood systems.</i>	<i>Advocating and educating the community, policymakers, and families on policies that promote the healthy development of young children.</i>	<i>Advancing the knowledge and skills of early childhood providers, educators, and families to support the healthy development of young children.</i>	<i>Stewarding funds to improve local early childhood services and supports, and dispersing them to qualified providers and partners for effective service delivery implementation.</i>
Examples	Local collaboration among partners to provide young children with developmental, hearing, vision, and oral health screenings; referrals; and follow up.	Expand access to nutritious food during summer months (unmet need), by bringing local partners and resources together.	Advocate for local ballot initiatives to increase resources to support young children and their families.	Support early childhood professionals to achieve associate and bachelor's degrees by providing college scholarships.	Serve as the Colorado Preschool Program (CPP) administrator to ensure implementation reaches all eligible families.
	Facilitate convenings where local CCCAP providers can meet with other local providers to problem solve and address issues together.	Use data to analyze disparities among families and work with partners to increase access.	Identify policy gaps to increase equitable access to child care and assistance.	Provide training and assistance for implementation of social-emotional support for young children and their families.	Fundraise on behalf of tuition assistance programs to support low income families with access to quality early learning programs.
	Bring partners together to create a universal entry point for families to access a range of services.	Leverage resources to enable community partners to better assess child care needs and collaborate to increase availability for 0-3 yrs.	Host local legislative forums to support policies that promote the well-being of young children and their families.	Enable providers to become more sustainable through access to business support and coaching.	Disperse funds to local child care providers to implement quality improvement efforts in alignment with funder goals.
Framework	Strong partnerships, robust public engagement, shared accountability	Sufficient investments	Sound policy	Effective leadership, relevant educational opportunities	Sufficient investments, effective leadership, shared accountability
In summary, to fulfill their legislative intent, while also aligning with the Early Childhood Colorado Framework, Councils improve the quality of early learning environments to prepare young children to enter kindergarten; build the resources and skills of families; ensure that families have access to social, physical, and mental health services; and deliver resources to increase the effectiveness of early childhood professionals.					

# Recent Impacts of Early Childhood Councils





# Community Investments in Early Childhood Councils Leveraged for their Systems in FY 2022

Investment Type	# of ECCs Securing Investment Type	Total (\$)	Median (\$)
Local Philanthropic Donations/Grants	17	\$2,671,965	\$100,000
In-Kind	15	\$745,012	\$39,167
Other Philanthropic Donations/Grants	14	\$1,941,115	\$91,525
Partner Donations	13	\$57,610	\$5,000
Individual Donations	13	\$123,987	\$8,659
Collaborative Funding	11	\$5,064,010	\$64,663
Fee for Service	8	\$389,701	\$10,969
Business Contributions	8	\$40,557	\$1,944
FTE	7	\$1,286,899	\$900
Land/Shared Space	6	\$485,340	\$20,000
Assets	4	\$104,358	\$2,000
Other	3	\$4,388,870	\$870,156
Passing Taxes	2	\$4,000,000	\$250,000
Creating Special District	0	\$0	\$0

**Total = \$21,298,824**

# Side-By-Side Comparison of ECCs and LCOs


	Early Childhood Council Statute HB 22-1295 26.5-2-201	Local Coordinating Organizations HB 22-1295 26.5-2-101
Legislative Declaration Summary	<u>Establish a comprehensive system of early childhood councils to increase and sustain the availability, accessibility, capacity and quality of early childhood services through the state, responsive to local needs and conditions</u> (pp 41).	<u>Support access to and equitable delivery of early childhood and family support programs and services</u> , identify gaps in service, foster partnerships, create alignment among public and private providers and agencies with the community and <u>establish a comprehensive, locally supported plan</u> for providing early childhood and family support programs and services equitably within the community (pp 25).
Definitions	Established locally in communities for the purpose of <u>developing and ultimately implementing a comprehensive system of early childhood services</u> to ensure school readiness of children five years of age or younger (pp 41).	Entity selected by the department to <u>implement a community plan for increasing access to, coordinating, and allocating funding for early childhood and family support programs</u> (pp 29).

Early Childhood Councils	Both ECC's and LCO's	Local Coordinating Organizations
<p data-bbox="253 88 716 153">Implement Colorado Shines Quality Improvement Activities</p> <p data-bbox="253 197 716 306">Provide coaching, navigation, and technical assistance to early care and education programs</p> <p data-bbox="253 345 716 454">Address early childhood workforce recruitment and retention needs (<a href="#">See Impact Brief</a>)</p> <p data-bbox="253 492 716 558">Address early childhood health and wellbeing needs (<a href="#">See Impact Brief</a>)</p> <p data-bbox="253 596 716 667">Provide Early Childhood Mental Health Consultation</p> <p data-bbox="253 705 716 776">Leverage a variety of funding for local Early Childhood Systems</p> <p data-bbox="253 814 716 994">Convene local community members and required stakeholders to assess gaps, coordinate planning, and implementation</p>	<p data-bbox="716 88 1180 230">Develop and implement a strategic plan/community plan to ensure comprehensive services for children and families.</p> <p data-bbox="716 268 1180 377">Support Early Care and Education providers within the system, including workforce issues</p> <p data-bbox="716 416 1180 487">Work to increase capacity for families</p> <p data-bbox="716 525 1180 634">Connect families to resources including early childhood services and whole family supports</p>	<p data-bbox="1180 88 1649 159">Support family access to preschool providers</p> <p data-bbox="1180 197 1649 230">Recruit preschool providers</p> <p data-bbox="1180 268 1649 377">Coordinate Application and enrollment process for EC programs for families and providers</p> <p data-bbox="1180 416 1649 525">Assist families with applying for wrap around early childhood and family support services</p> <p data-bbox="1180 563 1649 634">Coordinate preschool providers in connecting with other services</p> <p data-bbox="1180 672 1649 743">Manage mixed delivery system of preschool providers</p>



# Proposition ii Update

Jake Williams, Healthier Colorado

The background features several decorative elements: a series of parallel yellow lines in the top-left and bottom-right corners, and clusters of overlapping semi-circles in red, blue, yellow, and green in the top-right and bottom-left corners.

Vote YES on Prop 11  
Preschool  
for ALL  
Coloradans

# BACKGROUND

In 2020, Colorado's legislature referred Proposition EE to the voters via HB20-1427 with a bipartisan vote. In November 2020, Colorado voters overwhelmingly approved Proposition EE, which did the following:

**Increased existing taxes on tobacco and instituted a new tax on other nicotine products, generating approximately \$275 million per year for public health and education priorities**

**Invested in K-12 readiness by providing all Colorado kids with access to preschool in the year before kindergarten**

**Ensured that the revenue funded tobacco and nicotine cessation initiatives and a new statewide, voluntary universal preschool program that serves Colorado kids through community and school district-run programs**

**Dedicated funding to affordable housing and rural, public schools**

# THE PROBLEM

Proposition EE is bringing in more revenue than was estimated in the Blue Book revenue analysis in 2020.

Colorado's Taxpayer's Bill of Rights (TABOR) requires that voters approve the state's retention of the excess revenue.

If Proposition ii doesn't pass, Colorado will have to immediately refund the \$23.65 million to tobacco wholesalers and distributors, and then reduce the tax rate going forward. This will result in less money to spend on universal preschool.

# THE SOLUTION



By voting YES on Prop ii, we can respect the voters' intent and retain the \$23.65 million for universal preschool.



By voting YES, Proposition ii will allow approximately 5,100 more children access to additional preschool programs per year.



Additionally, studies have shown that higher prices on tobacco and nicotine products lead to less usage amongst youth and young adults.



By retaining these funds, we can keep these harmful products out of the hands of youth across the state of Colorado.





# WHAT WILL \$23.65M DO?

It will extend additional hours to more children, especially children with qualifying factors that need it the most, which include:

**Families with a household income below 270% of the 2023 Federal Policy Guidelines**

**Students with an Individualized Education Plan**

**Families experiencing homelessness**

**Students who are dual language learners**

**Students in foster or kinship care**

# WHAT CAN YOU DO?

Endorse

Network  
Comms

Story  
Telling

More at

<https://www.preschoolforallcoloradans.com>



# Next Steps and Final Thoughts

# ECLC

*Early Childhood Leadership Commission*

Next Meeting:

October 26, 2023

9:00 am - 12:00 pm

Virtual

Thank you!



# **ECLC State Agency and Organizational Updates**

## **August 24, 2023**

### **Colorado Department of Early Childhood**

#### ***New Deputy Director***

CDEC welcomed Stephanie Beasley as the new Deputy Executive Director for the Department on August 7.

Stephanie began her career providing direct services to children and families involved in child welfare. She served in many roles in child welfare in Indiana, including program and policy oversight. She served as the Director of the Indianapolis office and ultimately as Deputy Director of Field Operations leading child welfare services in all 92 counties. After leaving the Department of Child Services, Stephanie served as the VP of Statewide Outreach for Indiana Youth Institute providing community development and capacity building services to youth serving organizations in Indiana. She has served as a consultant and evaluator for multiple programs in her career.

Her focus remained on children and families and individuals experiencing crisis, mental health, or addictive disease. Stephanie served as the Chief Operating Officer for Adult and Child Health providing mental health and addictive disease services as well as housing, foster care, and youth development services in central Indiana. In 2020 Stephanie was appointed as the Director of Children and Family Services in Nebraska by then Governor, Pete Ricketts. In that role she led child support enforcement, child welfare, adult protective and economic assistance programs for the state of Nebraska. Currently, she serves as VP of Community Impact for Mile High United Way overseeing, United For Families, United For Schools and Personal Investment Enterprise.

#### ***CCCAP and UPK Resources***

The Division of Early Learning Access and Quality has released a [CCCAP and UPK Comparison Chart](#) and [UPK & CCCAP Enrollment Scenarios for Counties](#).

### **Colorado Department of Education**

Staff at the Colorado Department of Education have been working hard to help support the transition of our new Commissioner Susana Cordova who began as commissioner at the end of June. She has spent much of July and August on a listening tour across the state to gather a deeper understanding of the current educational needs in Colorado.

Without a regularly scheduled board meeting, July is typically a quiet month at CDE. During this time staff have continued to provide support to the Colorado Department of Early Childhood with the transition of universal preschool.

## Colorado Department of Public Health and Environment

### Colorado WIC/COWIC ([Erin.Kendrick@state.co.us](mailto:Erin.Kendrick@state.co.us)):

- [Colorado WIC's Impact Report](#) for FFY 2022-23 has been released.
- **Oct 1 Shift to Hybrid Operations** - As the federal COVID-19 public health emergency has ended, the USDA flexibilities that have allowed Colorado WIC to provide all services remotely (by phone) are ending on September 30, 2023. Due to this, starting October 1, 2023, WIC will once again need to gather participants' growth measurements (heights and weights) and hemoglobin levels at certification and recertification appointments. WIC can accept growth measurements (completed within the last 60 days) and hemoglobin results taken by a HCP or community health program. If this information is available, the participant can complete this appt by phone instead of in person.

### Immunization Program ([Sara.Lopez@state.co.us](mailto:Sara.Lopez@state.co.us)):

- Heather Roth or Sara Lopez are available to attend a future ECLC meeting to provide an overview of 2022-23 school and childcare immunization data if that would be helpful.
- **Updates to child care and K-12 immunization tables: the following message may be shared:**

Dear valued partner,

In order to support education and immunizing partners, the Immunization Branch at the Colorado Department of Public Health and Environment (CDPHE) provides annual updates to two resources that school nurses, child care nurse consultants, licensing specialists, environmental health inspectors, and others may use to determine a student's up-to-date status for school-required vaccines.

- [2023-2024 immunization table for child care and preschool.](#)
- [2023-2023 immunization table for kindergarten through 12th grade.](#)

CDPHE also developed a tool: [Interpreting the use of titers as an acceptable alternative to some school-required vaccines](#), which provides **guidance for health care providers and school personnel.**

If you have questions, email School and Child Care Nurse Consultant Sara Lopez at [sara.lopez@state.co.us](mailto:sara.lopez@state.co.us).

- The Immunization Program has been receiving requests from school nurses to provide immunization education and support for UPK families.

**Economic Mobility Program ([Isabel.Dickson@state.co.us](mailto:Isabel.Dickson@state.co.us)):**

- The Department of Early Childhood and the Economic Mobility program in the Prevention Services Division at CDPHE are excited to announce the job posting for their new shared FTE focused on family economic well-being. The [Economic Mobility & County Relations Liaison](#), housed within the State & Community Partnerships Unit at the Department of Early Childhood, will work in partnership with CDPHE and Get Ahead Colorado to expand knowledge of and access to concrete economic supports. The position will embed and align economic security programs and supports both within CDEC programs and in partnership with county-level human services and early childhood stakeholders. Please share with your networks!

**Colorado Farm to Child (Britt Martens, [brittany.martens@state.co.us](mailto:brittany.martens@state.co.us)):**

- **Farm to Child Gathering**  
*September 9, 2023, Fort Morgan - Save the Date*  
[Register here](#)

This full day in-person event will include 6 learning sessions, lunch, a travel stipend, and the opportunity to participate in a Farm to Child Collaborative meeting. Learning sessions will include Culinary Skills, Farm to Child 101, Gardening for Child Care, Local Food Regulations and more.

Visit the Farm to Child website to access resources on gardening, nutrition education, and local food purchasing available in English and Spanish.

To join the Farm to Child Collaborative newsletter and meeting list please [click here](#).

**Environmental Health and Sustainability ([Amy.gammel@state.co.us](mailto:Amy.gammel@state.co.us)):**

We are in the process of hiring staff to support the facilities and local public health agencies on the western slope. This will include providing inspections and direct support in the following counties: Pitkin, Rio Blanco, Moffat, Delta\*, Montrose\*, Ouray, Dolores, and Montezuma\*.

\* CDPHE is providing direct service support in these counties temporarily due to staffing limitations within the local public health agency.

**Maternal and Child Health Program ([Lyz.Sanders@state.co.us](mailto:Lyz.Sanders@state.co.us) or [Rachel.hutson@state.co.us](mailto:Rachel.hutson@state.co.us)):**

The MCH program is federally required to conduct a statewide needs assessment of the maternal and child health population every five years to inform program priority selection. The next needs assessment will launch in the fall of 2023. Please refer to this [MCH Data to Action Overview](#) for general information about the timeline and process. More details will be forthcoming, as the details are fleshed out.

### **Colorado Department of Human Services**

The Division of Child Welfare hosted a Townhall on fentanyl. We have seen several accidental overdoses and child deaths related to parents/family use of the drug and children's access to it. Our town halls are recorded and could be watched by anyone with interest. See a [Trend Alert](#) here, and watch the recording [here](#).

The Division of Economic and Workforce Support (DEWS) is collaborating with their workforce development partners to refer qualified candidates to agencies seeking support for hiring employees into entry-level childcare positions. If partners are interested in learning more or are interested in being connected to a workforce development organization, please contact Ian McMahon at [ian.mcmahon@state.co.us](mailto:ian.mcmahon@state.co.us).