



**TRANSITION
ADVISORY
GROUP**

**TAG Meeting 2:
August 4th**

The logo for the Transition Advisory Group features the text "TRANSITION ADVISORY GROUP" in a dark blue, sans-serif font, arranged in three lines. The text is enclosed within a light blue L-shaped frame that starts on the left and ends on the bottom right.

**TRANSITION
ADVISORY
GROUP**

Voices from the Field:

**Brenda Natt
Teacher, Hope Center**



**TRANSITION
ADVISORY
GROUP**

Welcome TAG Members

Welcome TAG Members

- *Jade Woodard*
- *Kallie Leyba*
- *Lisa Hill*
- *Mat Aubuchon*
- *Carol Woods*
- *Cassandra Johnson*
- *Nami Bhasin*
- *Angela Mills*
- *Kirsten Yang*
- *George Davis V*

A list of all TAG Members can be found [here](#).

TRANSITION
ADVISORY
GROUP

Agenda

- Welcome
- Voices from the Field
- Logistics
- Review charge
- Update from subgroups
- Discuss program movement to the new department
- Next steps
- Public comment

TRANSITION
ADVISORY
GROUP

The logo for the Transition Advisory Group features the text "TRANSITION ADVISORY GROUP" in a dark blue, sans-serif font, arranged in three lines. The text is enclosed within a light blue L-shaped bracket that starts at the top left and ends at the bottom right.

**TRANSITION
ADVISORY
GROUP**

Logistics

Meeting Norms

- Come prepared.
- Mute yourself when not speaking.
- Stay engaged (e.g., actively participate and use the chat function).
- Be mindful of how much “air time” each member receives.
- Always assume good intent.
- All ideas are valued.
- Center equity in all discussions.

Expectations

Every meeting you should expect the following:

- **Via e-mail the Friday before:**
 - Agenda for meeting
 - Suggested pre-reading
- **In meeting:**
 - Subgroup updates
 - Background information
 - Focused discussion around a specific part of the transition plan
 - Closing/next steps

TAG Meeting Schedule

Meetings take place on Wednesdays from 3–5pm MST

Meeting Dates*	Key Focus Areas
July 14	- Kick-off meeting : Introductions and mission/vision discussion
August 4	- Movement of programs to new department - Department structure & timeline of move
August 25	- Local governance structures and partnerships - Maximization of funds
September 15	- Unified enrollment - Data and technology needed for ideal state
October 20	- Review transition plan draft - Universal, voluntary preschool implementation
November 17	- Universal, voluntary preschool implementation to support most vulnerable populations and mixed delivery
December 15	- Additional topics regarding universal, voluntary preschool

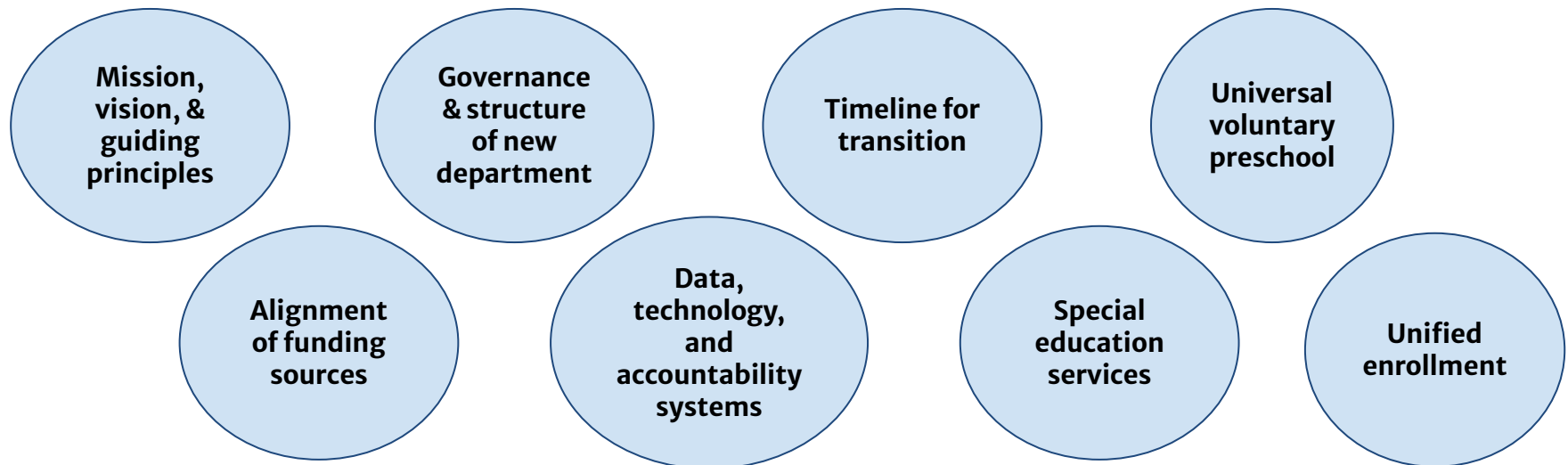
The logo for the Transition Advisory Group features the text "TRANSITION ADVISORY GROUP" in a dark blue, sans-serif font, arranged in three lines. The text is enclosed within a light blue L-shaped frame that starts at the top left and ends at the bottom right, with the text positioned inside the corner.

**TRANSITION
ADVISORY
GROUP**

Review TAG Charge

TAG Charge

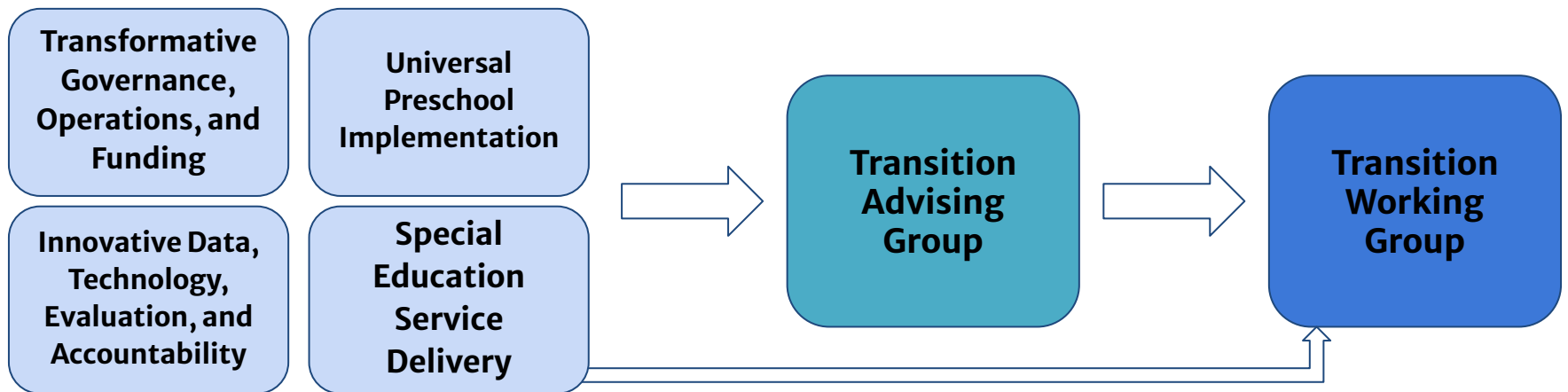
Over the coming months, TAG will convene to discuss ideas and recommendations for the transition plan to offer to the TWG, taking into consideration the work done in the topic subgroups, focus groups, town halls, and all other stakeholder engagement structures. Themes to be considered:



This will help render a plan for the new department and implementation of the new statewide, universal, voluntary preschool program that is robust, comprehensive, and centered on the children and families of Colorado.

Subgroup Structure

The ECLC Transition Advisory Group is convening subgroups to offer insights to guide the creation of a transition plan to the new unified department of early childhood. Each group will offer recommendations from their perspectives or in their areas of expertise.



TRANSITION
ADVISORY
GROUP

ECLC Guiding Principles

Colorado is committed to the following guiding principles in the development of the transition plan and universal, voluntary preschool recommendations:



Mission, Vision, and Values

Vision

All Colorado children, families, and early childhood professionals are valued, healthy and thriving.

Mission

The Colorado Department of Early Childhood champions a comprehensive, community-informed, effective, high quality and equitable early childhood system that supports the care, education and well-being of all Colorado's young children, their families and early childhood professionals in all settings.

Values

- We value equity across the early childhood system and are committed to utilizing an equity-focused lens to drive priorities and decision making.
- We believe that formal and informal care environments can provide high quality, developmentally appropriate care and learning.
- We respect and appreciate the diversity and strengths of all of our communities in Colorado.
- We believe that accessibility to early childhood services considers affordability, cultural responsiveness, and parent choice.
- We value an innovative and expansive approach to our early childhood system.



**TRANSITION
ADVISORY
GROUP**

Stakeholder Feedback

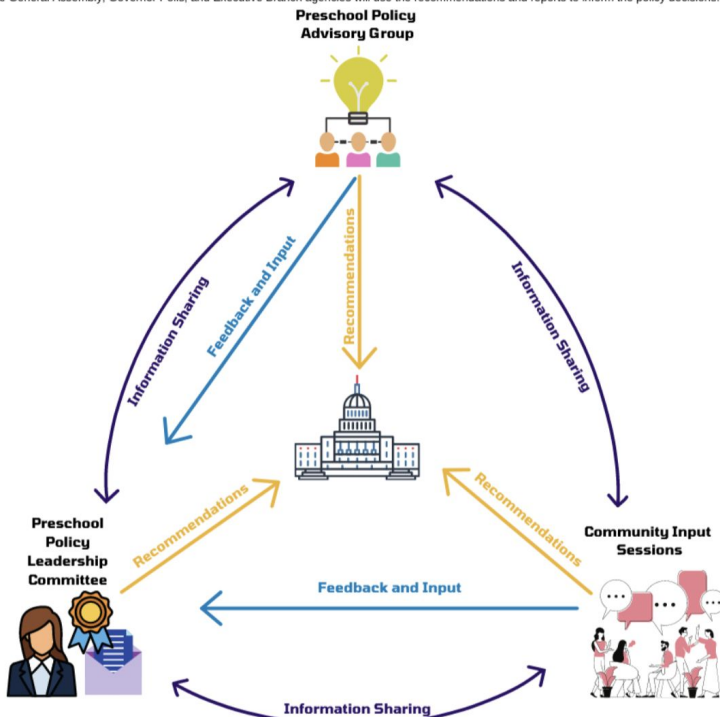
Prior Conversations: Children's Campaign

Preschool Policy Leadership Committee Report -Preschool Policy Advisory Group Community Voices

The Preschool Policy Leadership Committee, Advisory Group and Community Input Sessions will **continuously share information** during the policy development process. The Preschool Policy Advisory Group and Community Input Sessions will offer direct **feedback and input** to the Preschool Policy Leadership Committee as recommendations are being considered.

When the process is complete, Colorado legislators, Governor Polis, and state agency leaders will receive a set of **recommendations** from the Preschool Policy Leadership Committee, the Preschool Policy Advisory Group, and based on Community Input Sessions.

The General Assembly, Governor Polis, and Executive Branch agencies will use the recommendations and reports to inform the policy decisions.



THE FUTURE OF PRESCHOOL IN COLORADO | BRIEF 7 OF 7

Community Voices

Universal preschool will be implemented at the local level across the state. Stakeholders who deliver preschool, use preschool services, and support the early care and learning system weighed in on potential opportunities and concerns for Colorado's upcoming preschool expansion. Between October 2020 and April 2021, 47 organizations across the state held 61 listening sessions to gather the thoughts from those they serve. Their input is summarized and reflected in this brief.

Subgroup Themes

- There was a high degree of agreement among participants to consider moving a wide range of programs that serve children and families.
- However, participants questioned the movement of Preschool Special Education, Maternal and Child Health, Child and Adult Care Food Program, Child Welfare, and Temporary Assistance to Needy Families.
 - Consideration: Several programs serve children and families beyond age 5; consider whether programs (such as TANF) should be split between agencies, or whether those programs should be kept whole in their current location, but identify necessary alignment to preserve and support children and family access.
 - Consideration: Take this opportunity to expand our thinking about early childhood and avoid siloing programs based on age.
 - Consideration: Movement of some programs would require various levels of effort; this should be considered when determining whether a program should move or not (Governor approval; legislative change; federal waiver; etc)

Feedback Form Responses

A note about the Feedback Form [Responses](#):

- The responses are all shared publicly on the ECLC website removing all identifying information
- TAG members should review the responses in the feedback form before every meeting
- These responses are valuable input for this stakeholder engagement process

Listening sessions began yesterday with two provider experience sessions. A report from that session and the family listening sessions on August 24th will be shared out at the next TAG meeting.



**TRANSITION
ADVISORY
GROUP**

**Discussion: Programs Moving
to New Department**

Decisions Required by Legislation

According to [HB21-1304](#), the TWG must “develop a transition plan for the coordination and administration of early childhood programs and services by the new department and the existing departments, including, to the extent necessary, the *transition of existing services and programs to the new department and alignment of programs and services in the new department with programs and services that remain in other departments.*”

Charge of New Department

HB21-1304 calls for the new unified department of early childhood in collaboration with other departments, providers, and the community to:

- Provide high-quality, voluntary, affordable early childhood opportunities for all children in Colorado
- Coordinate the availability of early childhood programs and services in Colorado to meet the needs of all families
- Establish state and community partnerships that provide for a mixed delivery of child care and early childhood programs
- Prioritize family and community input
- Maximize the efficient use of resources to ensure that parents, children, and early childhood program and service providers are prioritized with a low administrative burden
- Prioritize the equitable delivery of resources and supports for early childhood
- Unify programs to support a streamlined parent and provider experience

Current Early Childhood Structure

CDE	
P-3 Office	Colorado Preschool Program (& additional school-system administered preschool funding sources, e.g. ECARE)
	Preschool Special Education †
	Early Childhood Assessment and Results Matter
	ECE Teacher Certification

CDPHE	
CACFP*	
Maternal and Child Health (Block Grant) * †	

CDHS		
OEC	Division of Early Learning Access and Quality	<ul style="list-style-type: none"> - Child Care Attendance Tracking System - Colorado Child Care Assistance Program (CCCAP)* - Colorado Shines Quality Rating and Improvement System (QRIS) - Early Childhood Councils & CCR&Rs - Early Childhood Workforce & Professional Development (PDIS)
	Division of Community and Family Support	<ul style="list-style-type: none"> - Child Abuse Prevention Trust Fund - Colorado Community Response - Community-Based Child Abuse Prevention Program - Early Childhood Mental Health - Early Intervention - Family Resource Centers - Fatherhood Program* - Head Start - Home Visiting Programs (e.g., NFP, SafeCare, PAT, Healthy Steps, Child First, HIPPPY) - Incredible Years - Promoting Safe and Stable Families
	Division of Early Learning, Licensing and Administration	<ul style="list-style-type: none"> - Background Investigation Unit - Child Care Licensing*
	Operations	<ul style="list-style-type: none"> - Communications - Early Childhood Leadership Commission - Federal Opportunities (e.g., Preschool Development Grant) - Finance and Contracts - Strategy / Policy
OES		TANF* †
OCYF		Child Welfare*

*these programs provide services to children beyond 5 years old

† see next slide for more information

Current Program Overview



CPP/
ECARE

PreK
Special
Education
Services

Additional funding
sources, including Title
1 PreK

Office of
Early
Childhood

Office of
Economic
Security
(TANF)

Office of Children, Youth and
Families (Child Welfare)

Child and
Adult Care
Food
Program

Child and
Maternal
Health
Block
Grant

TRANSITION
ADVISORY
GROUP

Key Topics

As subgroups and other engagement opportunities are kicking off here is some context for the ongoing conversations:

- ***Temporary Assistance for Needy Families (TANF)***
 - TANF is a program that serves low-income families and thereby children birth – adulthood
 - States can [transfer up to 30%](#) of TANF funding to CCDF to serve children, once transferred they are subject to CCDF rules and reporting.
 - In FY 2019, Colorado reported using 3% of TANF funding for child care services.*
- ***Maternal and Child Health***
 - The federal Maternal and Child Health bureau administering the Maternal and Child Health block grant is administered through all state health departments
 - Some programming related to maternal and child health, such as NFP, MIECHV and FRCs, are already within OEC.
- ***Individuals with Disabilities Education Act (IDEA), Part B***
 - CDE is the State Education Agency who is responsible for administering IDEA
 - The named Special Education Subgroup is discussing the federal requirements and regulations of IDEA and how to create an integrated EC system in their ongoing meetings.

Program Placement in Other States

Functions	Early Childhood Program or System	AL	GA	MA	NM
Administrative	Child Care licensing	Human Resources	EC	EC	EC
	Head Start Collaboration	EC	EC	EC	EC
Quality / Accountability	EC assessment system	EC	EC	EC	EC
	QRIS	Human Resources	EC	EC	EC
Workforce	Professional Development Information System	K-12	EC	EC	EC
	EC Professional Credential	EC - preK at K-12	EC	EC	EC
	EC Educator Licensing	K-12	EC	EC	EC
Program Delivery	Child Care subsidies (i.e. CCAP)	Human Resources	EC	EC	EC
	Part B	K-12	K-12	K-12 (EC splits governance)	K-12
	Part C	Rehabilitation Services	Public Health	HHS	EC
	EC mental health specialists	Mental Health	Behavioral Health	EC	EC
	Child and Adult Care Food Program	K-12	EC	K-12	EC
	Home Visiting	EC	Public Health	HHS	EC
	Family Resource Centers	Independent	Human Services	HHS	EC
	State Preschool Program	EC	EC	EC	EC
	State Advisory Council for EC	EC	EC	EC	EC
	Early Literacy Programs	K-12	K-12 & EC	K-12	EC
	Maternal and Child Health	Public Health	Public Health	Public Health	Public Health

Guiding Principles



Mission, Vision, and Values

Vision

All Colorado children, families, and early childhood professionals are valued, healthy and thriving.

Mission

The Colorado Department of Early Childhood champions a comprehensive, community-informed, effective, high quality and equitable early childhood system that supports the care, education and well-being of all Colorado's young children, their families and early childhood professionals in all settings.

Values

- We value equity across the early childhood system and are committed to utilizing an equity-focused lens to drive priorities and decision making.
- We believe that formal and informal care environments can provide high quality, developmentally appropriate care and learning.
- We respect and appreciate the diversity and strengths of all of our communities in Colorado.
- We believe that accessibility to early childhood services considers affordability, cultural responsiveness, and parent choice.
- We value an innovative and expansive approach to our early childhood system.

Breakout Room Assignments

Breakout Room 1	Breakout Room 2	Breakout Room 3	Breakout Room 4	Breakout Room 5
Staff Member: Jessica	Staff Member: Nasha	Staff Member: Kristina	Staff Member: Sarah	Staff Member: Merlyn
Amber Bilby	Debra Locke	Jamie Ulrich	Maegan Lokteff, PhD	Robert A. DeHerrera
Angela Fedler	Deidre Johnson	Kallie Leyba	Maria Tarajano Rodman	Robert McDaniel
Angela Mills	Diane Price	Kate Brunner, MA/LIS	Mary Alice Cohen	Scott Bright
Anji Gallanos	Dustin Elliott	Khatira Amn	Mat Aubuchon	Sherri Valdez
Anna Jo Haynes	Elisabeth Lawrence	Ki'i Powell	Megan Burch	Sherri Wright
Ashley Henshaw	Elsa Holguin	Kirsten Yang	Melissa Buchholz, PsyD	Sondra Ranum
Ayelet Talmi, PhD	Floyd Cobb, Ph.D.	Kristie Kauerz	Melissa Mares	Tara Manthey
Betty Dalton	Gerie Grimes	Laurie Noblitt	Michelle Shiffman	Tom Brinegar
Brandon LaChance	George Davis V	Leigh Pytlinski	Moira Hawks	Tracey Lucero
Carol Woods	Gina Robinson	Lisa A. Hill	Nami Bhasin	Ty Johnson
Carsten Baumann	Jade Woodard	Lorena Garcia	Penny Harris	Whitney LeBoeuf
Cassandra Johnson				

[Excel Spreadsheet](#) to capture notes when in breakout rooms.

TAG Considerations

What should the TWG consider as they are thinking about which functions move to the new department?

- What should be considered when thinking about which functions move? Why?
- What should be considered when thinking about what functions do not move to the new department? Why?
- How do these themes connect back to the guiding principles?
- Other feedback?

Main Room: <https://meet.google.com/wef-dbqk-rid> | Dial-in (US): 586-459-0581 | PIN: 294 206 624#

- Breakout Room #1: meet.google.com/uuk-ajth-bby | Dial-in: (US) +1 405-362-7638 | PIN: 983 048 529#
- Breakout Room #2: meet.google.com/ooy-ywne-cbm | Dial-in: (US) +1 307-463-1686 | PIN: 935 027 254#
- Breakout Room #3: meet.google.com/krb-iaov-khx | Dial-In (US): +1 240-670-4921 | PIN: 512 301 899#
- Breakout Room #4: meet.google.com/eis-fxcg-fkk | Dial-in: (US) +1 470-326-0149 | PIN: 293 128 179#
- Breakout Room #5: meet.google.com/rmm-xqpb-osm | Dial in: (US) +1 339-788-5376 | PIN: 181 847 385#

[Excel Spreadsheet](#) to capture notes when in breakout rooms.



**TRANSITION
ADVISORY
GROUP**

Share Out to Group

One minute summary per group

The logo for the Transition Advisory Group features the text "TRANSITION ADVISORY GROUP" in a dark blue, sans-serif font, arranged in three lines. The text is enclosed within a light blue L-shaped frame that starts at the top left and ends at the bottom right, with the corner of the frame pointing towards the text.

**TRANSITION
ADVISORY
GROUP**

**Discussion: Program Structure
in New Department**

Decisions Required by Legislation

According to [HB21-1304](#), the TWG must “develop a transition plan for the coordination and administration of early childhood programs and services by the new department and the existing departments, including, to the extent necessary, the transition of existing services and programs to the new department and alignment of programs and services in the new department with programs and services that remain in other departments.”

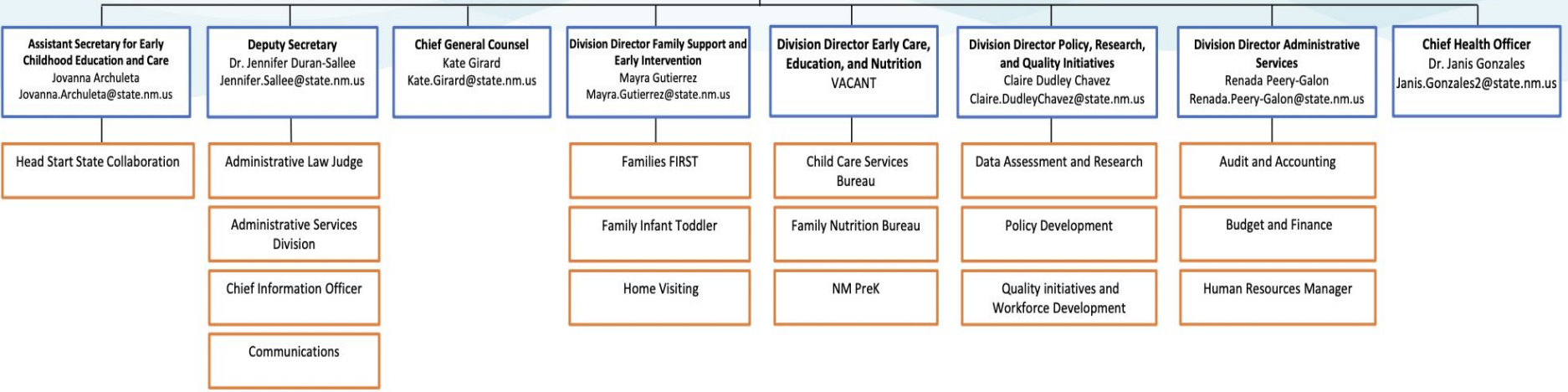
Additionally the transition plan must address “the governance and **structure of the new department**, including recommendations regarding a state board of early childhood.”

New Mexico Org Chart



Division - Leadership Team
Team - Reports to Leadership Team

NM Early Childhood Education and Care Department
Cabinet Secretary
Elizabeth Groginsky
Elizabeth.Groginsky@state.nm.us

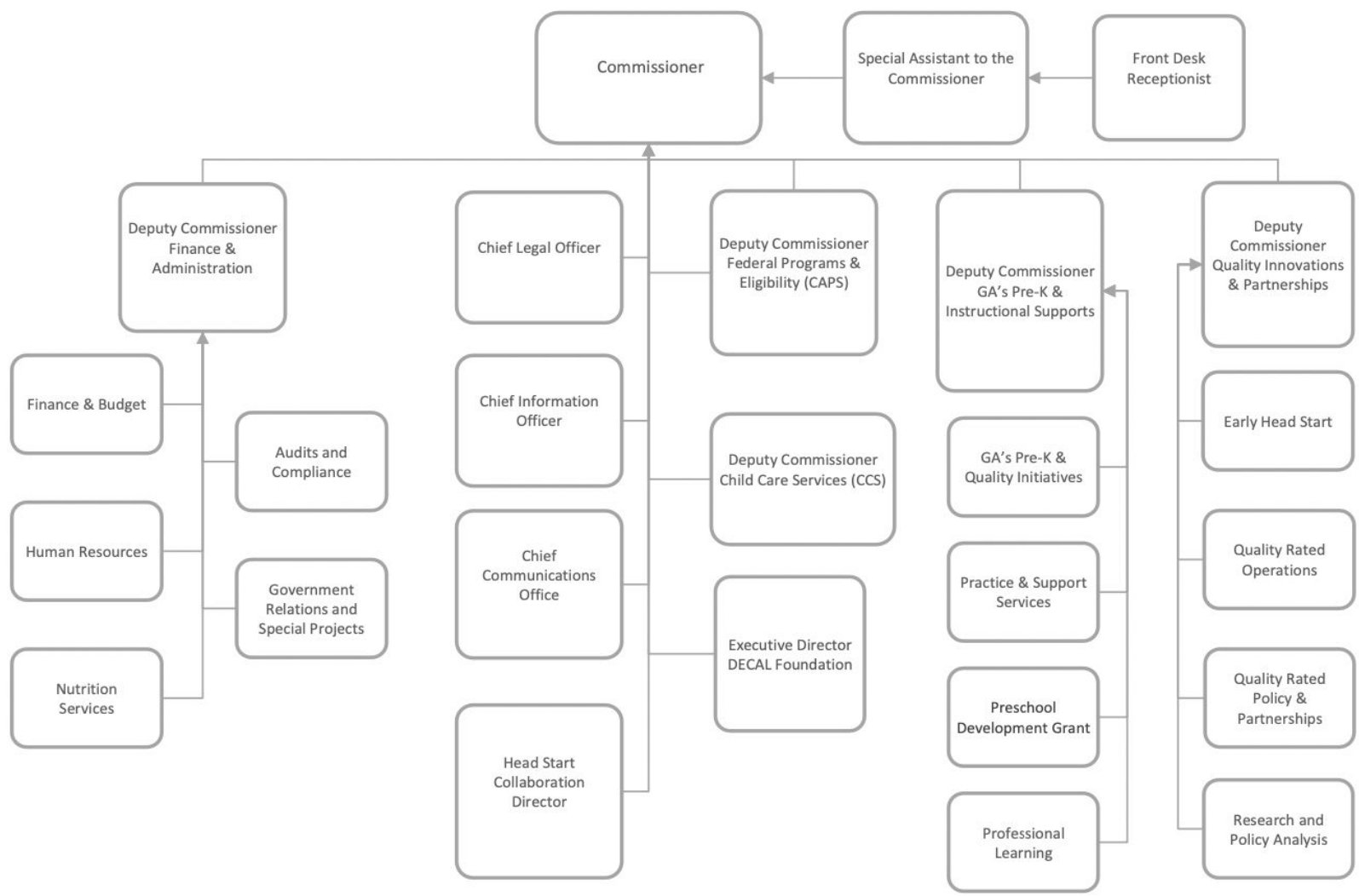


Massachusetts Org Chart



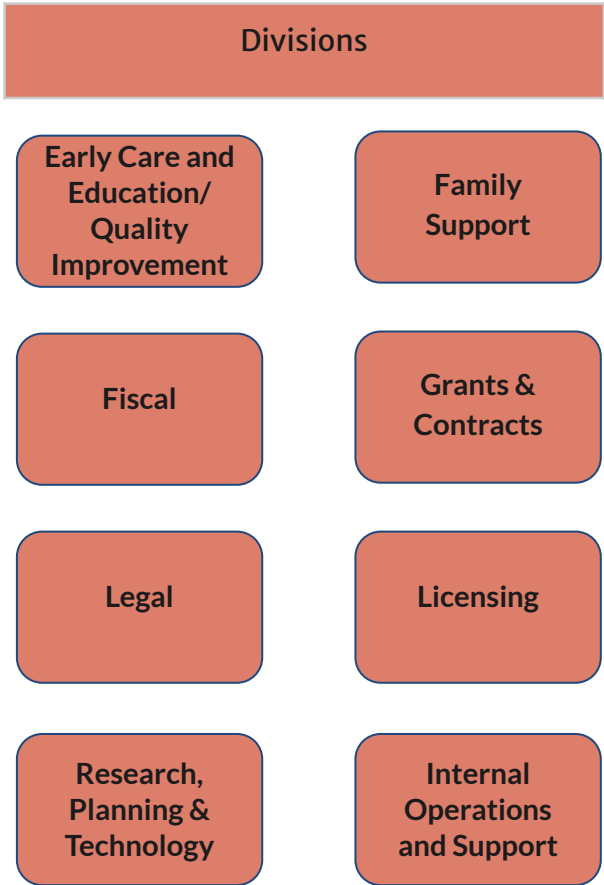
Georgia Org Chart

Bright from the Start: GA Department of Early Care and Learning



Connecticut Org Chart

Key Administrative Positions
Commissioner
Chief Operating Officer
Chief Research and Planning Officer
Director of Government and Community Relations
Child Care Development Fund Administrator
Director of Head Start State Collaboration Office



Guiding Principles



Mission, Vision, and Values

Vision

All Colorado children, families, and early childhood professionals are valued, healthy and thriving.

Mission

The Colorado Department of Early Childhood champions a comprehensive, community-informed, effective, high quality and equitable early childhood system that supports the care, education and well-being of all Colorado's young children, their families and early childhood professionals in all settings.

Values

- We value equity across the early childhood system and are committed to utilizing an equity-focused lens to drive priorities and decision making.
- We believe that formal and informal care environments can provide high quality, developmentally appropriate care and learning.
- We respect and appreciate the diversity and strengths of all of our communities in Colorado.
- We believe that accessibility to early childhood services considers affordability, cultural responsiveness, and parent choice.
- We value an innovative and expansive approach to our early childhood system.

Breakout Room Assignments

Breakout Room 1	Breakout Room 2	Breakout Room 3	Breakout Room 4	Breakout Room 5
Staff Member: Jessica	Staff Member: Nasha	Staff Member: Kristina	Staff Member: Sarah	Staff Member: Merlyn
Amber Bilby	Debra Locke	Jamie Ulrich	Maegan Lokteff, PhD	Robert A. DeHerrera
Angela Fedler	Deidre Johnson	Kallie Leyba	Maria Tarajano Rodman	Robert McDaniel
Angela Mills	Diane Price	Kate Brunner, MA/LIS	Mary Alice Cohen	Scott Bright
Anji Gallanos	Dustin Elliott	Khatira Amn	Mat Aubuchon	Sherri Valdez
Anna Jo Haynes	Elisabeth Lawrence	Ki'i Powell	Megan Burch	Sherri Wright
Ashley Henshaw	Elsa Holguin	Kirsten Yang	Melissa Buchholz, PsyD	Sondra Ranum
Ayelet Talmi, PhD	Floyd Cobb, Ph.D.	Kristie Kauerz	Melissa Mares	Tara Manthey
Betty Dalton	Gerie Grimes	Laurie Noblitt	Michelle Shiffman	Tom Brinegar
Brandon LaChance	George Davis V	Leigh Pytlinski	Moira Hawks	Tracey Lucero
Carol Woods	Gina Robinson	Lisa A. Hill	Nami Bhasin	Ty Johnson
Carsten Baumann	Jade Woodard	Lorena Garcia	Penny Harris	Whitney LeBoeuf
Cassandra Johnson				

[Excel Spreadsheet](#) to capture notes when in breakout rooms.

TAG Considerations

- What are the commonalities across the structures of these unified agencies? Which ones resonate and why?
- What must the new organization *structure* accomplish? Why?
- What must the new organization *structure* ensure does not happen? Why?

Main Room: <https://meet.google.com/wef-dbqk-rid> | Dial-in (US): 586-459-0581 | PIN: 294 206 624#

- Breakout Room #1: meet.google.com/uuk-ajth-bby | Dial-in: (US) +1 405-362-7638 | PIN: 983 048 529#
- Breakout Room #2: meet.google.com/ooy-ywne-cbm | Dial-in: (US) +1 307-463-1686 | PIN: 935 027 254#
- Breakout Room #3: meet.google.com/krb-iaov-khx | Dial-In (US): +1 240-670-4921 | PIN: 512 301 899#
- Breakout Room #4: meet.google.com/eis-fxcg-fkk | Dial-in: (US) +1 470-326-0149 | PIN: 293 128 179#
- Breakout Room #5: meet.google.com/rmm-xqpb-osm | Dial in: (US) +1 339-788-5376 | PIN: 181 847 385#

[Excel Spreadsheet](#) to capture notes when in breakout rooms.



**TRANSITION
ADVISORY
GROUP**

Share Out to Group

One minute summary per group



**TRANSITION
ADVISORY
GROUP**

**Discussion: Timeline for
Movement**

Timeline Consideration

The new Department of Early Childhood will launch in **July 2022**.

Universal, voluntary statewide preschool will launch in **July 2023**.

What considerations are important when determining the timeline for moving functions to the new department?

Opportunities?

Risks?

The logo for the Transition Advisory Group features the text "TRANSITION ADVISORY GROUP" in a dark blue, sans-serif font, arranged in three lines. The text is enclosed within a light blue L-shaped frame that starts at the top left and ends at the bottom right, with the text positioned inside the corner.

**TRANSITION
ADVISORY
GROUP**

Closing/Next Steps

Next Steps

Meeting Dates*	Key Focus Areas
July 14	- Kick-off meeting : Introductions and mission/vision discussion
August 4	- Movement of programs to new department - Department structure & timeline of move
August 25	- Local governance structures and partnerships - Maximization of funds
September 15	- Unified enrollment - Data and technology needed for ideal state
October 20	- Review transition plan draft - Universal, voluntary preschool implementation
November 17	- Universal, voluntary preschool implementation to support most vulnerable populations and mixed delivery
December 15	- Additional topics regarding universal, voluntary preschool

Subgroups will meet the weeks of August 9 and August 16.

The logo for the Transition Advisory Group features the text "TRANSITION ADVISORY GROUP" in a dark blue, sans-serif font, arranged in three lines. The text is enclosed within a light blue L-shaped bracket that starts at the top left and ends at the bottom right.

**TRANSITION
ADVISORY
GROUP**

Public Comment