

STEERING TEAM ORIENTATION

# EARLY CHILDHOOD COLORADO FRAMEWORK REFRESH

January 2023



A photograph of two young children with dark, curly hair lying on a white surface. The child on the left is smiling, and the child on the right is laughing with their mouth open. A small, fluffy white cat is lying in front of them. A semi-transparent dark rectangle is overlaid on the image, containing the word 'WELCOME!' in white capital letters.

WELCOME!

# THIS ORIENTATION WILL COVER:

- Refresh Process: Context Setting
- Meeting the Project Team
- Setting Expectations: Your Role
- What's Ahead: Jan 23 Meeting



# MEET THE PROJECT TEAM



**Leila**  
Project Manager



**Nicole**  
Advisor



**Mimi**  
Stakeholder  
Engagement



**Traci**  
Comms Plan



**Gina**  
Stakeholder  
Engagement



**Judi**  
Landscape &  
Recommendations



**Sallie**  
Survey  
Development &  
Administration

# COMMUNITY AGREEMENTS

I Agree



Stay engaged



Listen deeply to learn



Speak your truth



Respect confidentiality



Welcome diverse  
perspectives



Notice patterns of  
participation



Experience discomfort and  
turn to wonder

# WHAT DO WE MEAN BY **FRAMEWORK REFRESH**?

FACILITATE A  
STATEWIDE  
STAKEHOLDER  
ENGAGEMENT  
PROCESS TO PROVIDE  
**AN UPDATED EARLY  
CHILDHOOD  
COLORADO  
FRAMEWORK**



# Early Childhood Colorado Framework

## A SHARED VISION

For more information visit [earlychildhoodframework.org](http://earlychildhoodframework.org)

ADOPTED JULY 2008 | UPDATED JULY 2015

## Core Principles

The Early Childhood Colorado Framework is based on and guided by these principles:

- Whole child and family centered
- Prenatal through age eight
- Strengths based
- Culturally relevant and responsive
- Outcomes focused
- Informed by evidence based and promising practices
- Cross-sector collaboration

## Strategies for Action

- Connect and Empower Families
- Build Community Capacity
- Implement Quality Standards
- Make Data Informed Decisions
- Develop and Retain the Workforce
- Support Consumer Affordability
- Advance Sustainable Business Practices
- Encourage Public Private Approaches
- Pursue Continuous Quality Improvement
- Ensure Coordinated Services
- Promote and Share Knowledge

## Fundamentals

Strong Partnerships  
Sufficient Investments  
Sound Policy  
Robust Public Engagement  
Shared Accountability  
Effective Leadership  
Relevant Education Opportunities

## Outcomes ► access, quality and equity

 Family Support & Education  Health & Well-Being  Learning & Development

### ACCESS

- Family engagement and leadership opportunities exist within programs, schools and communities
- Services and supports promote the well-being and resiliency of parents and caregivers
- Family friendly policies and practices exist in the workplace
- Comprehensive health coverage and services are consistently utilized by pregnant women and children
- Integrated and preventive maternal and child physical, behavioral and oral health services are available
- All settings promote mental health and well-being through early identification, consultation and treatment
- Education, coaching and ongoing training exist for caregivers, teachers and other professionals
- Learning experiences and environments are high quality, developmentally appropriate and affordable

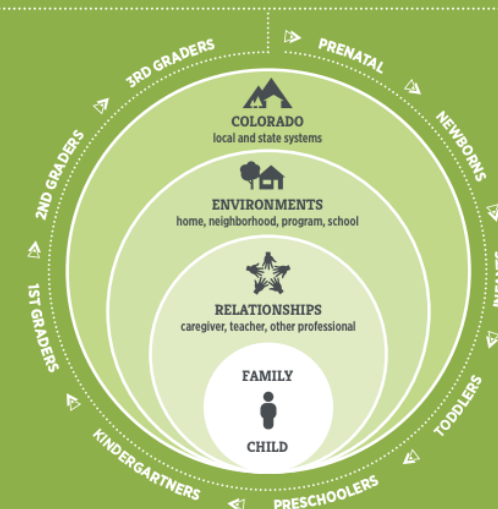
### QUALITY

- Family knowledge and capacity support children's healthy development and learning
- Families advocate for high quality comprehensive services and supports that lead to future success
- All health care providers, including mental health, deliver coordinated, family focused care
- Settings and practices promote strong relationships, social and emotional development, appropriate nutrition and physical activity
- Formal and informal care environments and education practices reach the highest levels of quality
- Adults understand and support children's learning and development, including social and emotional
- All settings provide effective transitions across and within programs, schools and systems

### EQUITY

- Education, employment, housing, financial and legal supports contribute to family economic security
- Families, including those with high needs, experience timely and coordinated services and supports
- Families have the ability to plan the number and timing of their children
- All environments are safe, free of toxins, have affordable foods and offer physical activity
- Children with special health, behavioral or developmental needs receive individualized services and supports
- All children are ready for school and achieving by 3rd grade regardless of ability, race, place, income, language and culture
- Children, including those with high needs, receive timely, comprehensive and affordable academic services and transition supports

## all children are valued, healthy and thriving



## Results



### CHILD

Young children reach their developmental potential and are ready to succeed in school and in life



### ENVIRONMENTS

Environments that impact children are safe, stable and supportive



### RELATIONSHIPS

Adults are knowledgeable, responsive and interact effectively with and on behalf of children



### COLORADO

Localities and the state attain economic and social benefits by prioritizing children and families

# PROCESS AND TIMELINE

October 2022-September 2023

## START

Oct 2022-Sept 2023

Through Sept 2023

Through April 2023

Jan-April 2023



May-July 2023

July-Sept 2023

September 2023

## FINISH



A close-up photograph of a person's hand, palm facing up, with blue paint smeared across it. The background is blurred, showing more paint and what appears to be a palette. Overlaid on the image is the text 'WHAT IS MY ROLE HERE?' in a large, white, sans-serif font.

WHAT IS MY  
ROLE HERE?





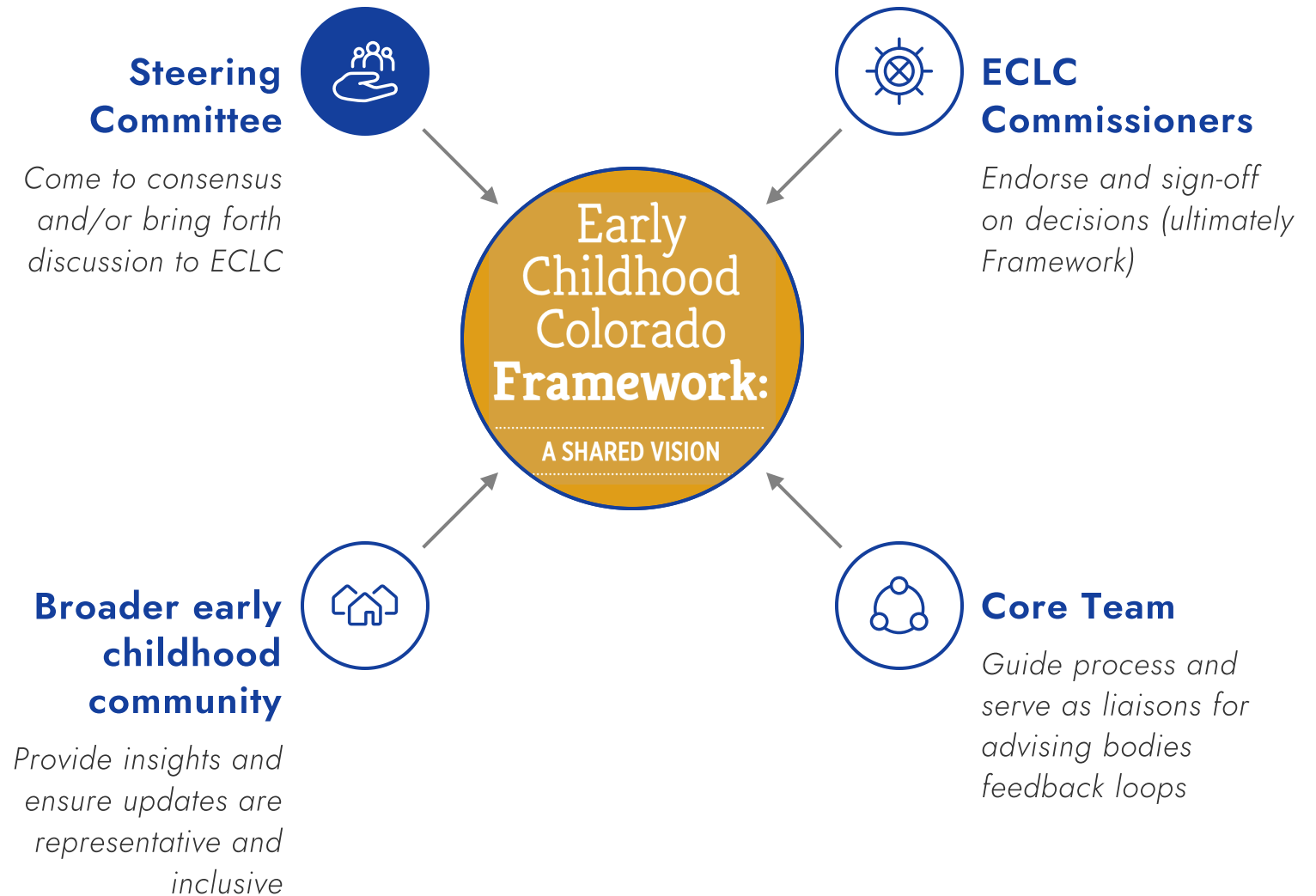
# EARLY CHILDHOOD STAKEHOLDERS ARE WELL-POSITIONED TO GENERATE MEANINGFUL SOLUTIONS

*Your perspective is integral to the success of this process because you...*

- ✓ Bring varied knowledge and a **unique perspective**.
- ✓ Can articulate the **strengths, assets, and challenges across communities**.
- ✓ Will ensure that the updated framework is **inclusive and representative of the current realities and experiences** of families, communities, and systems leaders.

# ROLES & DECISION-MAKING

*Input and feedback from community members are critical partners in this work.*



# ARC OF ENGAGEMENT

## EXPECTATIONS

**As a Steering Committee member, you are expected to...**

- 1) Complete orientation for the Steering Committee**
- 2) Participate in a total of four (4) meetings from January through Sept 2023**
- 3) Commit to prework and post work in preparation for meetings**
- 4) Share information with your communities and bring back their collective knowledge and feedback**

JAN

### MTG #1: PLAN

Share plan for stakeholder engagement

### Your Contribution

Share guidance on how to ensure successful stakeholder engagement and garner outreach support

APRIL

### MTG #2: FINDINGS

Review findings from stakeholder engagement, lit review, research of other EC frameworks

### Your Contribution

Reflect and brainstorm what components are important to inform an updated framework for CO

JUNE

### MTG #3: CO-CREATE

Present recommendations for framework updates

### Your Contribution

Provide feedback on recommended updates to support finalization of the framework

SEPT

### MTG #4: LAUNCH

Present updated framework and brainstorm opportunities for launch

### Your Contribution

Support in identifying ambassadors and key sharing opportunities for a successful launch



# WHAT'S AHEAD

In preparation for the January 23 meeting, please complete the requested prework.

- Review the current **CO EC Framework**.
- **Come prepared to share reflections** on the following questions: *What do you hope to see in an updated Framework? What's missing from the current Framework? What do you think is most important to know or consider for stakeholder engagement and outreach?*
- Review the **Zoom and Miro tips and tricks at the end of this deck**.  
Reviewing these in advance will support virtual participation.



**WE ARE LOOKING  
FORWARD TO  
PARTNERING  
WITH YOU!**

Any questions?

[sammander@schoolreadinessconsulting.com](mailto:sammander@schoolreadinessconsulting.com)



SUPPORTING VIRTUAL PARTICIPATION

# PLATFORM TIPS & TRICKS

~15 minutes

## SUPPORTING VIRTUAL PARTICIPATION

# ONLINE PLATFORM TIPS AND TRICKS



**WHAT** A communication platform that allows users to connect with video, audio, phone, and chat.

**HOW** The easiest way to join the meeting is by clicking the link sent to you in advance of the meeting. If you do not have the Zoom app and do not want to download it, you can join from your internet browser by clicking “Join from Browser.”

**WHEN PARTICIPATING** To limit background noise, we recommend muting yourself when not speaking. Check your audio, microphone, and camera by clicking on the icons located on the toolbar. While your video will be off by default, we welcome you to enable it. We find it adds to the overall experience of a virtual meeting.

## Practice

To acclimate yourself to the Zoom interface and the toolbar in which you will be able to manage your audio, video, and the chat feature, review the following video walkthroughs.

**Zoom audio and video basics (3 min)**

**Zoom chat and reactions feature (5 min)**



## SUPPORTING VIRTUAL PARTICIPATION

# ONLINE PLATFORM TIPS AND TRICKS



**WHAT** An online whiteboarding platform that allows a team to visually brainstorm, plan, and design together. Imagine a virtual world of easel pads and post-it notes!

**HOW** Ahead of the meeting, you will be sent a link to the meeting's Miro board. You do not need to create an account to participate.

## Practice

The following short tutorials will provide you with the basic knowledge necessary to participate on a Miro board.

**Navigation (3 min)**

**Collaboration (3 min)**

**Getting started section: Sticky Notes (1 min read)**