



Colorado Shines Brighter Strategic Plan Update

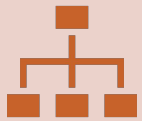
Landscape Analysis Overview

“This project was made possible by grant number 90TP0054. Its contents are solely the responsibility of the authors and do not necessarily represent the official view of the United States Department of Health and Human Services, Administration for Children and Families.”

Purpose of the Landscape Analysis



Inventory organizations that are moving the Strategic Plan forward.



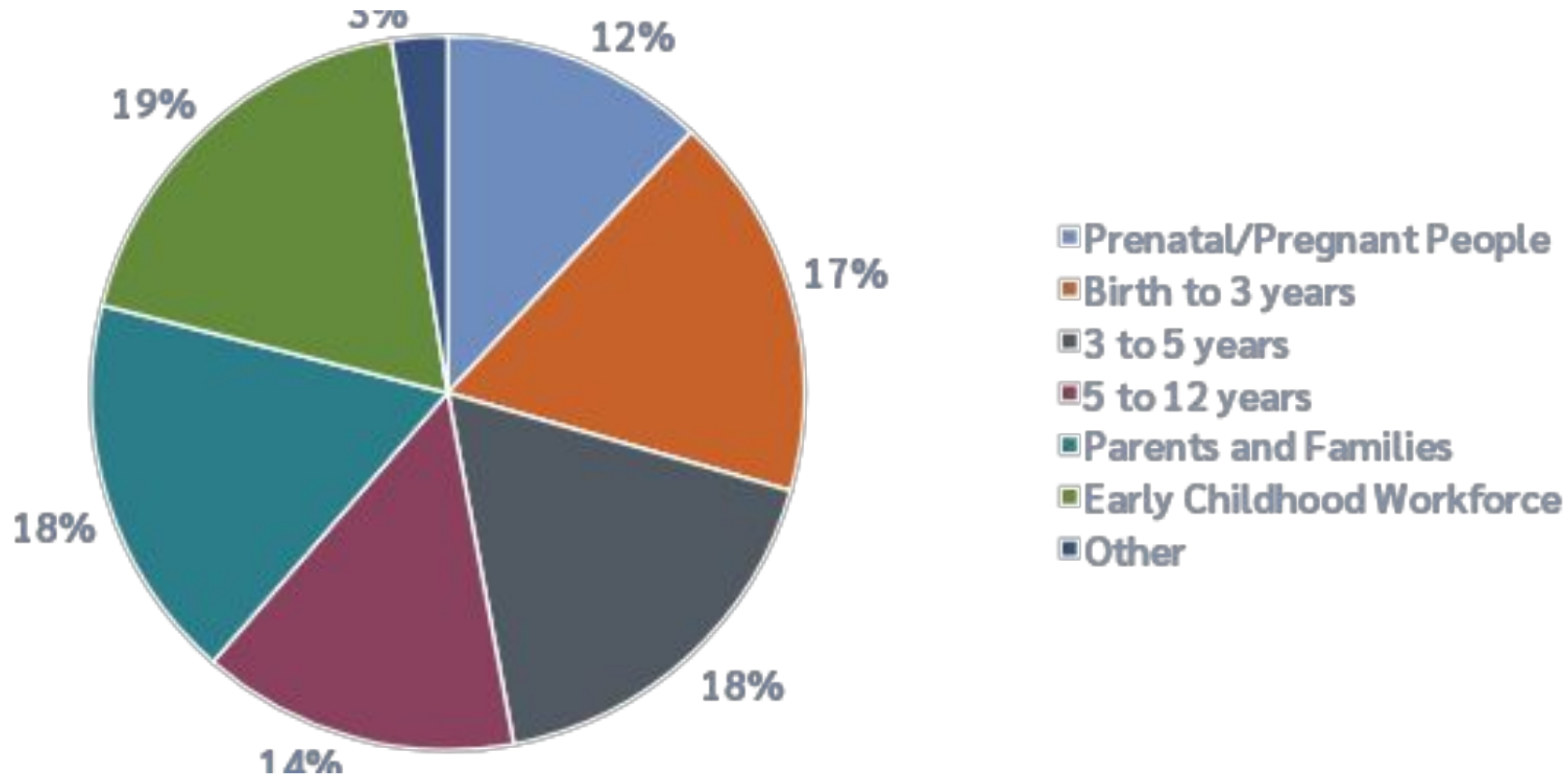
Classification of those organizations by relevant characteristics (ages served, location, strategy addressed)

Geographic Regions Represented in the Landscape Analysis

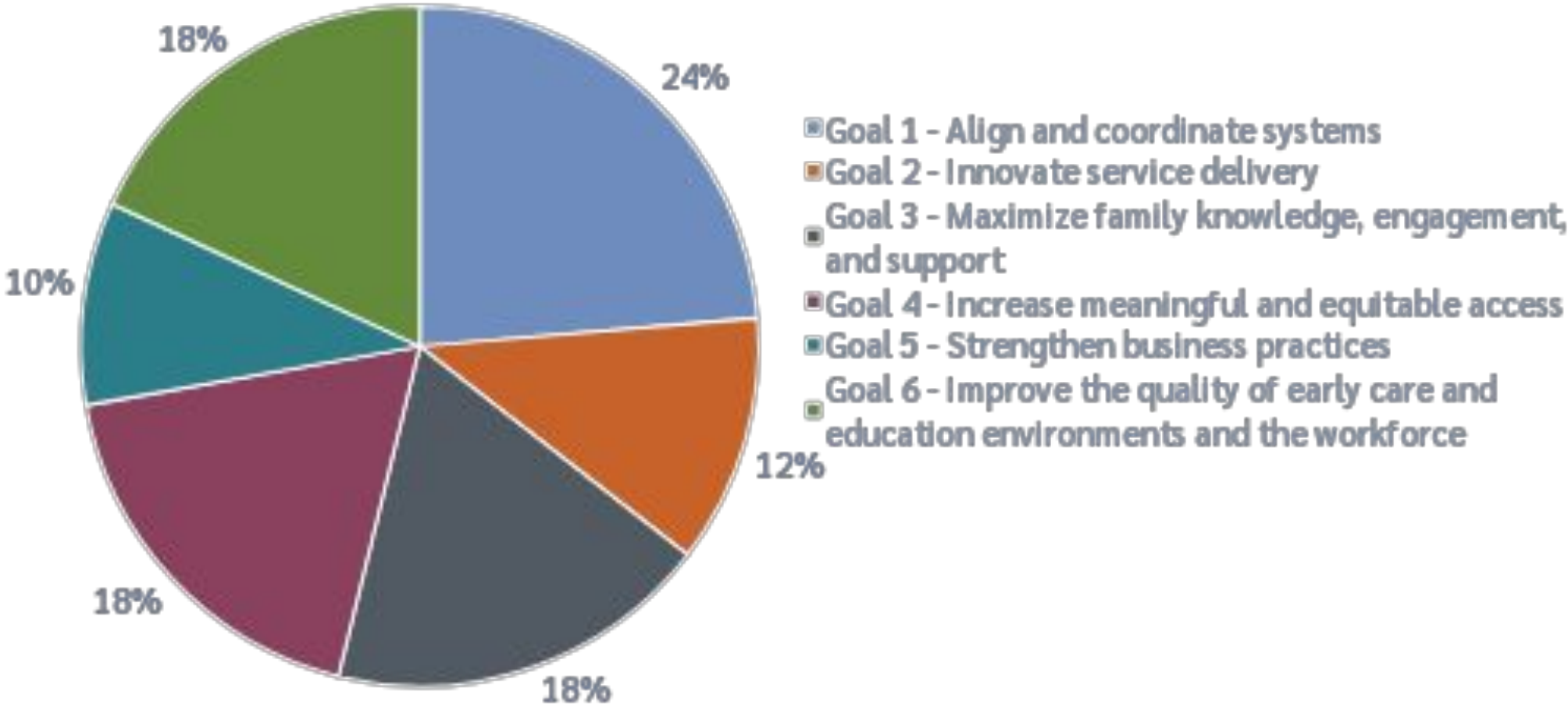


Primary Geographic Region Served	Number of activities
Statewide	123
Denver	37
Weld	33
Adams	29
Fremont	29
Chaffee	27
La Plata	25
Larimer	21
Boulder	15
Grand	12
Eagle	11
Pueblo	11
>10 each (Arapahoe, Mesa, Morgan, Summit, Alamosa, Aurora, El Paso, Arapahoe, Douglas)	41

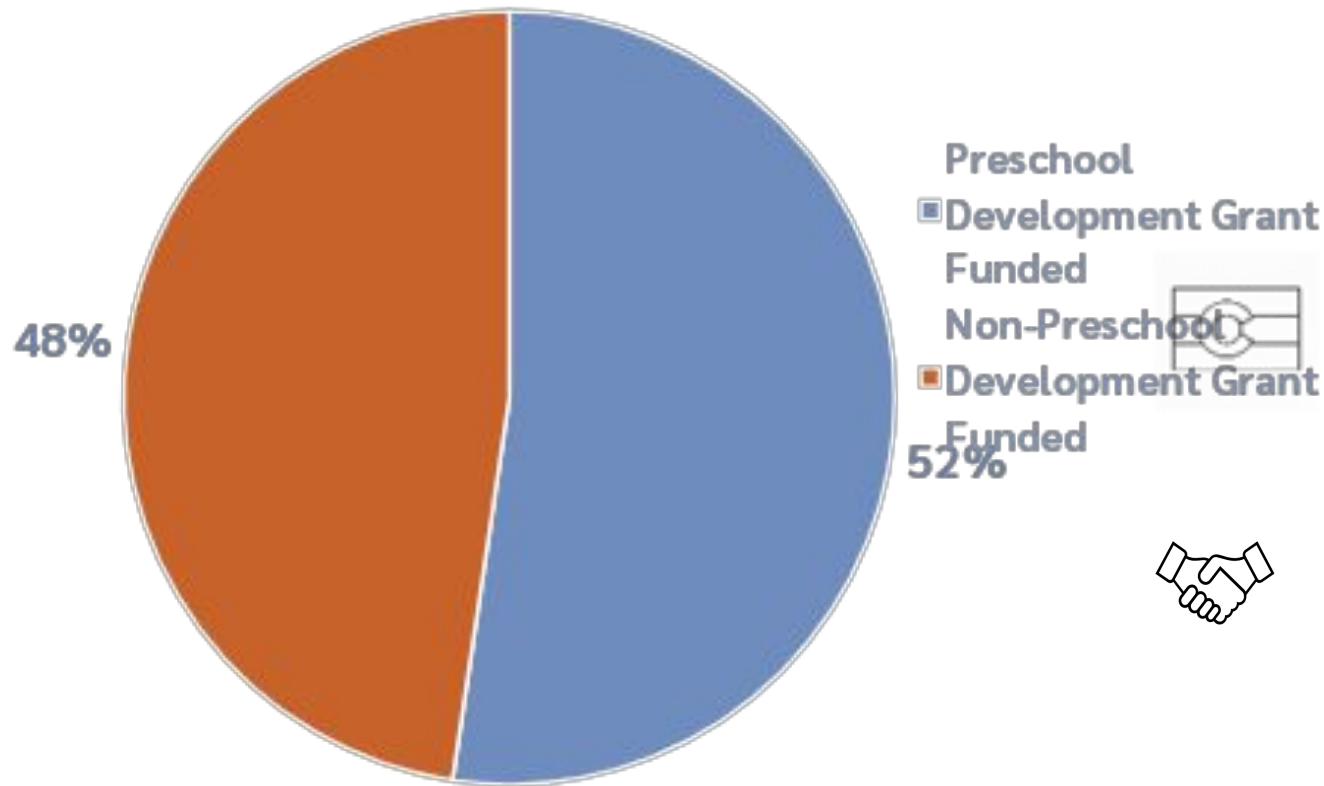
Populations Reached by Activities



Goals Covered by Activities



Activities Covered by Preschool Development Grant¹ Funding



¹ A federal Preschool Development Grant Birth through Five (PDG) was awarded to the Colorado Department of Human Services Office of Early Childhood in 2019 for three years (2020-2022). The grant funds will be used to implement activities identified in the Colorado Shines Brighter Strategic Plan to maximize the number of high-quality early care and education options available to families, especially families identified as under-resourced such as those living in rural areas, families of infants and toddlers, and families of children with special needs.

Using the Landscape Analysis



The Landscape Analysis and instructions on how to use the dashboard can be found at the Early Childhood Leadership Commission Website.

www.earlychildhoodcolorado.org



For more information on the Landscape Analysis please contact:

Kristina Heyl at kristina.hey@state.co.us or 303-866-5223