

Thank you for joining! We will begin shortly.

ECLC

Early Childhood Leadership Commission

Program Quality & Alignment Subcommittee

July 14, 2023

9:00 - 11:00 am

Google Meet



- Please remember to mute your computer or phone when not speaking ●
 - We will be recording the meeting ●
- All materials can be found at: www.earlychildhoodcolorado.org/program-quality-and-alignment-subcommittee ●



Welcome, Introductions & Approve Minutes

Dr. Floyd Cobb

Meeting Objectives

- Approve the May 12, 2023 Meeting Minutes
- Learn about the Statewide Strategic Plan revision process and provide initial feedback
- Review the proposed new Early Childhood Colorado Framework and provide final feedback
- Learn about new Early Childhood math research efforts
- Hear comments from the Early Childhood Community



Updating Colorado's Early Childhood Strategic Plan

Tamilah Richardson, Katie Fisher, Susanne Beilmann, & Rebecca Klein, Start Early



Consulting

7/14/23

Updating Colorado's Early Childhood System Strategic Plan

Program Quality and Alignment Subcommittee Meeting



Agenda

- Introduction
- Strategic plan process overview
 - Purpose and Scope
 - Activities
 - Hopes, dreams, fears
- Progress of current strategies (not funded by PDG) and updates needed
 - Breakout Groups
- Closing/Next Steps

Who We Are: Champions of Early Childhood



Purpose of Updating Strategic Plan

- To build on new needs assessment
- To expand the scope from birth-to-five to prenatal-to-five and to include other sectors beyond but related to early care and education
- To integrate goals and strategies from the broad array of CO plans related to early childhood that currently exist – the “plan of plans”
- To better integrate equity in the strategic plan
- To reflect progress that has been made since the original drafting of the strategic plan

Guiding Principles/Values for this Process

- We will make space (likely with ECLC Strategic Plan Working Group) to define principles/values that will guide this process of updating the strategic plan. For example:
 - **Equity**
 - Whole child focus
 - Engaging families as partners, leaders, and advocates
 - Cultural and linguistic responsiveness
 - Inclusiveness
 - Accountability
- There are great resources in CO to pull from already!
 - [CO Early Childhood Family Engagement Framework](#)
 - Draft updated Early Childhood Colorado Framework
 - CDEC is working on its own set of values

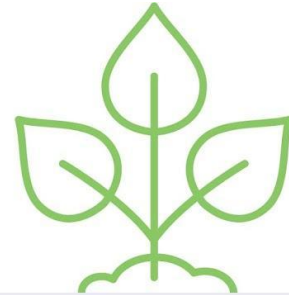
Our distinct approach to building equity & quality



CO-CREATE
SOLUTIONS

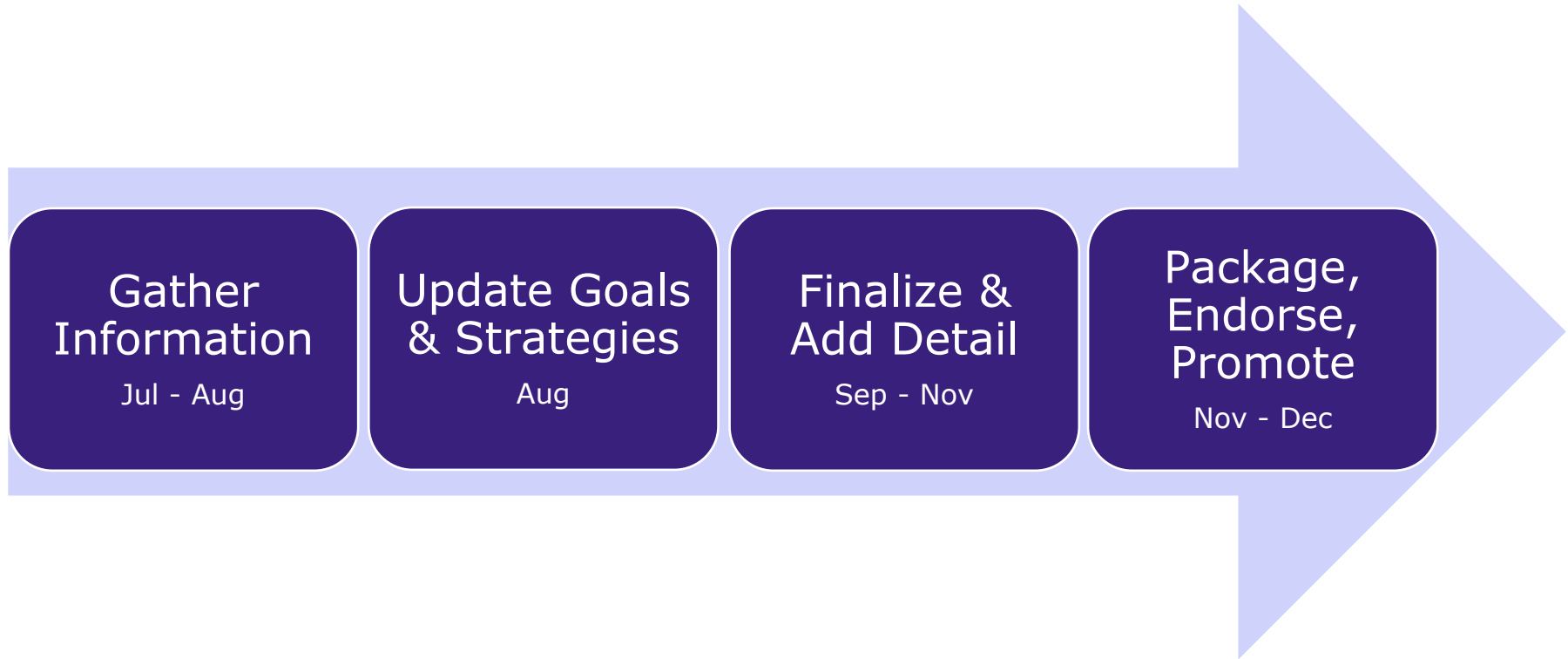


CENTER FAMILY &
PROVIDER VOICES



DESIGN FOR
SUSTAINABILITY

Overview of Strategy Development Process



Overview of Strategy Development Process



Gather Information

Jul - Aug

Activities

- Map out strategy development process using Feedback Schedule, Alignment Communications Plan, and Partner Engagement Plan
- Convene Strategic Planning Working Group
- Draft cross-sector early childhood plan review and themes document
- Review needs assessment, evaluation, new EC system framework, etc.
- Gather information about progress of current strategies
- Hold key informant interviews
- Draft survey and focus group protocols
- Disseminate survey (translated into Spanish) and recruit for/host family and provider focus groups (8 focus groups with ~10 ppl, 2 in Spanish)
- Aggregate and analyze input; Draft Partner Engagement Findings Report

Milestones

- Initial findings from Needs Assessment available (7/30)
- Cross-sector EC plan review and themes document complete (7/31)
- Key informant interviews, focus groups, and survey complete (8/7)
- Partner Engagement Findings Report complete (8/18)

Overview of Strategy Development Process



Gather Information

Jul - Aug

Key Partners, Community Conversations

- ECLC Program Quality and Alignment (PQA) Subcommittee – today!
- Family Voice Council – 7/17, 8/17
- ECLC Strategic Plan Working Group – TBD (one meeting in Jul., two meetings in Aug.)
- CDEC staff, PDG Implementation Team – TBD in Jul.
- ECLC Home Visiting Investment Strategy Working Group – TBD
- ECLC Early Childhood Comprehensive Systems Working Group – 7/25
- CDEC State Intermediaries Quarterly Meeting – 8/11
- Other Key Partners to Engage - dates TBD: ECLC Data and Evaluation Subcommittee, Family Resources Centers Association, Early Childhood Council Leadership Association, Partnership for Thriving Families Leadership Team

Overview of Strategy Development Process



Update Goals & Strategies

Aug

Activities

- Use initial Needs Assessment findings, Partner Engagement Findings, cross-sector EC plan review, and other information gathered
- Collaborate with the Strategic Plan Working Group and others
- Determine what updates are needed to reflect current progress, what new strategies are needed to address current needs, and what changes are needed to advance equity
- Draft Strategic Plan At-A-Glance- goals, objectives, strategies
- Begin rebranding ideation

Milestones

- Updated Early Childhood Colorado Framework complete
- *Draft* Strategic Plan At-A-Glance complete (8/31)

Key Partners, Community Conversations

- ECLC Strategic Plan Working Group - TBD
- CDEC Staff Café Conversation – 8/31

Overview of Strategy Development Process



Update Goals & Strategies

Aug

Activities

- Use initial Needs Assessment findings, Partner Engagement Findings, cross-sector EC plan review, and other information gathered
- Collaborate with the Strategic Plan Working Group and others
- Determine what updates are needed to reflect current progress, what new strategies are needed to address current needs, and what changes are needed to advance equity
- Draft Strategic Plan At-A-Glance- goals, objectives, strategies
- Begin rebranding ideation

Milestones

- Updated Early Childhood Colorado Framework complete
- *Draft* Strategic Plan At-A-Glance complete (8/31)

Key Partners, Community Conversations

- ECLC Strategic Plan Working Group - TBD
- CDEC Staff Café Conversation – 8/31

Overview of Strategy Development Process



Finalize & Add Detail

Sep - Nov

Activities

- Incorporate feedback into draft Strategic Plan At-A-Glance
- Create Key Performance Indicators (KPIs) for Strategic Plan and process for managing progress on strategic plan using KPIs
- Draft Strategic Plan Report (includes description of process, rationale)
- Work with graphic designer on refreshed Strategic Plan title, tagline, brand colors/design elements for Strategic Plan At-A-Glance and Report

Milestones

- Finalized Strategic Plan At-A-Glance ready for graphic design (10/2)
- Final Needs Assessment report complete (10/30)
- *Draft Workforce Plan* by Early Milestones available in Oct.
- Strategic Plan Report content ready for graphic design (11/8)

Key Partners, Community Conversations

- ECLC PQA Subcommittee – 9/8
- ECLC Strategic Plan Working Group - TBD (two meetings Oct. and Nov.)
- Family Voice Council – 9/21
- ECLC ECCS Working Group – 9/26, 10/24
- ECLC – 10/26

Note: This timeline may shift. The timing of activities and engagement of various groups should be considered tentative.

Overview of Strategy Development Process



Package,
Endorse,
Promote

Nov - Dec

Activities

- Complete graphic design
- Translate Strategic Plan At-A-Glance and Report into Spanish
- Draft partner register, promotion plan, and promotional deliverables

Milestones

- Designed Strategic Plan At-A-Glance in English and Spanish complete (11/15)
- Partner register and promotion plan complete (11/16)
- Designed Strategic Plan Report in English and Spanish complete (11/30)
- Promotional deliverables complete (11/30)
- ECLC Endorsement of Strategic Plan Report (12/21)
- Final Workforce Plan by Early Milestones available in December

Key Partners, Community Conversations

- ECLC – 12/21

Strategic Planning Process Reflections

What are your hopes, dreams and fears for Colorado's strategic planning process?

- Please add your thoughts to the [JamBoard](#).
- We will ask for a few share-outs!

Strategic Plan Progress Updates

Please join one of the breakout sessions listed below. There are two focus questions and a reference document to capture notes on each of the identified goals and objectives. **Each group will need to identify a recorder to make notes in the sheet.**

Group 1- Align and Coordinate Systems

Group 2- Maximize Family Knowledge, Engagement and Support

Group 3- Meaningful and Equitable Access: Building Community Practice

Group 4- Meaningful and Equitable Access: Supporting Customer Affordability

Group 5- Strengthening Business Practices

Group 6- Implementing Quality Standards

Strategic Plan Progress Updates: Focus Questions

1. What is the progress of current strategies (not funded by PDG) for your group's goal and objectives?
2. What are the updates needed for each of these strategies?

Reference Document: [Early Childhood Systems Strategic Plan Updates](#)



Every child has equitable opportunity to reach their full potential to thrive in school and in life.

[StartEarly.org/Consulting](https://www.startearly.org/Consulting)

Find [startearly.org](https://www.startearly.org) on: [!\[\]\(bd1a142de767a21e5362c595f844a4ff_img.jpg\)](#) [!\[\]\(d4257ae6a3e163e6d467b3eb87960fa1_img.jpg\)](#) [!\[\]\(37da042f270bb1ebdb248503fcdcdd43_img.jpg\)](#) [!\[\]\(22b1bf7712f21472f961e36af9cc7acb_img.jpg\)](#)

rklein@startearly.org

trichardson@startearly.org

sbeilmann@startearly.org

kfisher@startearly.org



Early Childhood Colorado Framework Refresh Review and Feedback

Nicole Sharpe and Leila Sammänder, School Readiness Consulting

WELCOME!

EARLY CHILDHOOD COLORADO FRAMEWORK REFRESH

Program Quality and Alignment Subcommittee Meeting - July 14



EARLY CHILDHOOD CO FRAMEWORK REFRESH

ECLC

Early Childhood Leadership Commission

FACILITATE A STATEWIDE
STAKEHOLDER ENGAGEMENT
PROCESS TO PROVIDE AN
**UPDATED EARLY CHILDHOOD
COLORADO FRAMEWORK**



GROUNDING IN THE FRAMEWORK

Early Childhood Colorado Framework A SHARED VISION

For more information visit earlychildhoodframework.org
ADOPTED JULY 2008 | UPDATED JULY 2015

Core Principles

The Early Childhood Colorado Framework is based on and guided by these principles:

- Whole child and family centered
- Prenatal through age eight
- Strengths based
- Culturally relevant and responsive
- Outcomes focused
- Informed by evidence based and promising practices
- Cross-sector collaboration

Strategies for Action

- Connect and Empower Families
- Build Community Capacity
- Implement Quality Standards
- Make Data Informed Decisions
- Develop and Retain the Workforce
- Support Consumer Affordability
- Advance Sustainable Business Practices
- Encourage Public Private Approaches
- Pursue Continuous Quality Improvement
- Ensure Coordinated Services
- Promote and Share Knowledge

Fundamentals

- Strong Partnerships
- Sufficient Investments
- Sound Policy
- Robust Public Engagement
- Shared Accountability
- Effective Leadership
- Relevant Education Opportunities

Outcomes ► access, quality and equity

Family Support & Education Health & Well-Being Learning & Development

ACCESS

- Family engagement and leadership opportunities exist within programs, schools and communities
- Services and supports promote the well-being and resiliency of parents and caregivers
- Family friendly policies and practices exist in the workplace
- Comprehensive health coverage and services are consistently utilized by pregnant women and children
- Integrated and preventive maternal and child physical, behavioral and oral health services are available
- All settings promote mental health and well-being through early identification, consultation and treatment
- Education, coaching and ongoing training exist for caregivers, teachers and other professionals
- Learning experiences and environments are high quality, developmentally appropriate and affordable

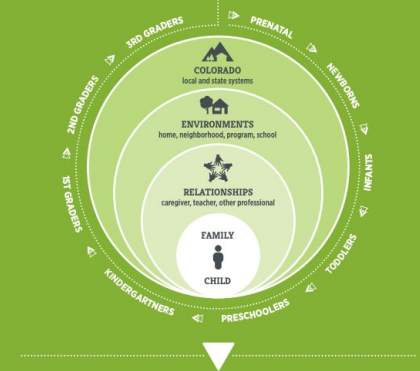
QUALITY

- Family knowledge and capacity support children's healthy development and learning
- Families advocate for high quality comprehensive services and supports that lead to future success
- All health care providers, including mental health, deliver coordinated, family focused care
- Settings and practices promote strong relationships, social and emotional development, appropriate nutrition and physical activity
- Formal and informal care environments and education practices reach the highest levels of quality
- Adults understand and support children's learning and development, including social and emotional
- All settings provide effective transitions across and within programs, schools and systems

EQUITY

- Education, employment, housing, financial and legal supports contribute to family economic security
- Families, including those with high needs, experience timely and coordinated services and supports
- Families have the ability to plan the number and timing of their children
- All environments are safe, free of toxins, have affordable foods and offer physical activity
- Children with special health, behavioral or developmental needs receive individualized services and supports
- All children are ready for school and achieving by 3rd grade regardless of ability, race, place, income, language and culture
- Children, including those with high needs, receive timely, comprehensive and affordable academic services and transition supports

all children are valued, healthy and thriving



Results

- CHILD**
Young children reach their developmental potential and are ready to succeed in school and in life
- ENVIRONMENTS**
Environments that impact children are safe, stable and supportive
- RELATIONSHIPS**
Adults are knowledgeable, responsive and interact effectively with and on behalf of children
- COLORADO**
Localities and the state attain economic and social benefits by prioritizing children and families

PROCESS AND TIMELINE

October 2022-September 2023

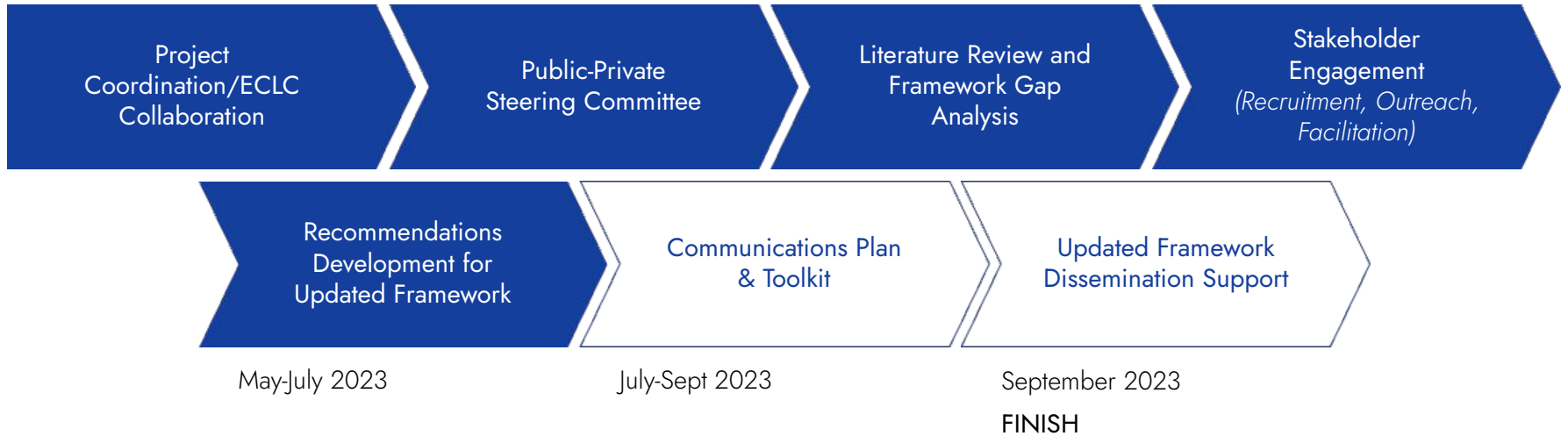
START

Oct 2022-Sept 2023

Through Sept 2023

Through April 2023

Jan-April 2023



FINISH

OUTREACH AT-A-GLANCE

AS A RESULT OF SUPPORT FROM ECLC AND THE STEERING COMMITTEE...



602 PEOPLE

throughout the state provided their ideas, feedback and insights through stakeholder engagement

340
COMPLETED
THE SURVEY

256
ATTENDED
LISTENING
SESSIONS

11
PARTICIPATED
IN 1:1 CHATS

Count as of 5/21

THE UPDATED FRAMEWORK UNDERSTANDING THE SHIFTS



RECOMMENDATIONS FOR UPDATES

Grounded in stakeholder engagement, literature review, and other framework gap analysis

- 1 Be clear around purpose and audience**
Intro that defines purpose, audience, and utilization of *Framework* as roadmap
- 2 Highly graphic and accessible in multiple languages, formats and platforms**
Emphasis on visuals, language justice, and reading level to support accessibility; creating communication tools to support learning and sharing
- 3 Grounding in the importance of early childhood**
"Making the case" for early childhood in Colorado to set context and emphasize a shared responsibility
- 4 Clear, brief, consistent vision**
Ground in the current vision and make clearer connections to how system components lead to the vision
- 5 Elevate foundational system values**
Elevate equity to show how it's threaded throughout, as well as expanding upon definitions (values statements) and adding other priority values
- 6 Expand on core components that support the system**
Expand on the "green circles" to highlight infrastructure and name the important role the community plays
- 7 Highlight interconnectedness and multitude of supports**
Define the current domains to represent the comprehensiveness of services; adding a fourth domain (economic supports)
- 8 Revisit the outcomes based on current needs and priorities**
Update outcomes to reflect priorities; emphasis on alignment and coordination across system; embed equity across outcomes

THEORY OF CHANGE

If WE BELIEVE



★ VALUES

Equitable

Every child deserves the same chance to thrive.

WHOLE-CHILD CENTERED

Babies and young children are of the highest priority.

FAMILY-FOCUSED

Healthy families mean healthy children.

CULTURALLY RESPONSIVE

Culture, language, and lived experiences must be honored.

INCLUSIVE

Shared power and decision-making are essential for lasting change.

EVIDENCED-BASED INNOVATIVE

Proven and promising practices lead to better outcomes

COMMUNITY-DRIVEN

Each community has unique needs to be met.

ACCOUNTABLE

Understanding impact is key to making real progress.

And BUILD A STRONG SYSTEM



★ EARLY CHILDHOOD SYSTEM

Collaboration

All elements working together—in local communities to the state level—toward a shared vision for all of Colorado's young children.

Comprehensive services to fully support the healthy bodies and minds of children and their families.

Early care and education that nurtures children's physical, social-emotional, and intellectual growth.



Resources and networks that support families on their child's first caregiver and most important teacher.

Assistance to ensure families are financially stable and have their basic needs met.

WORKFORCE

Early childhood professionals who are diverse, equitably compensated, and prepared to serve in the many settings involved in child development and education.

LEADERSHIP

A strong underlying network of leaders to make timely and responsive decisions about programs and policies.

FUNDING

Abundant resources to fully meet the needs of children, families, and communities.

DATA & RESEARCH

Information to better understand the early childhood system and plan future actions that lead to improved, sustainable, and more equitable outcomes.

It WILL LEAD TO



★ OUTCOMES



Access

All children and families have access to a range of early childhood services that are culturally relevant, meet their needs and preferences, and are equitably allocated and available.



Quality

Every young child experiences a safe and nurturing environment that affirms all aspects of their identity and supports all areas of development.



Alignment

All the components of the early childhood systems are aligned and coordinated so families are able to easily identify, navigate, and receive services for their children.

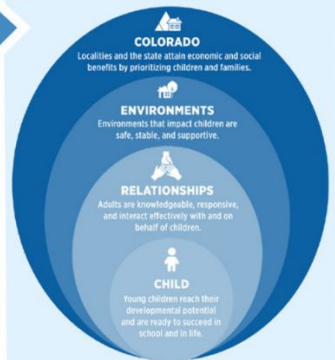
The FUTURE OF COLORADO



★ VISION



★ RESULTS



CHECK OUT THE UPDATED FRAMEWORK!

FEATURES OF THE UPDATED FRAMEWORK

- **Introduction defining what the Framework is** (and is not) and how to navigate the expanded *Framework* as a roadmap
- **Highly visual theory of change that connects how the system components, domains, and outcomes** work in alignment and coordination towards a shared vision
- **Narrative that provides expanded context** to represent comprehensiveness of the *Framework* (*star pages*)
Vision, Values, the System, and Outcomes and Results
- **Acknowledgement and appreciation to the families, providers, and communities** that contributed to the *Framework*

WHAT RESONATED



- **Accessibility** through visuals and language
- **Theory of change** graphic
- **Comprehensive and content-rich** - folks feel "seen" and represented in the system
- Expanded focus on **equity** + role of the **community**

ADDITIONAL SHIFTS

Since these shifts, we have also met with the Core team, Steering Team, and ECLC and are planning to make a number of additional enhancements.

CONTENT

- **Aligning values** with guiding principles adopted for the early childhood system
- Expanding on **equity definition** and clearly defining **language access and justice**
- **Visually integrating the workforce** as a system component and expanding list of key supports

- Further considerations for how **economic supports** is defined as a fourth domain

USABILITY

- **Increasing accessibility** to support learning and sharing (*multiple formats and languages*)
- Small terminology and formatting tweaks to **increase clarity**

FOR THE FUTURE...



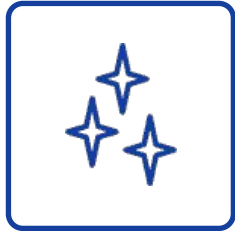
- Further **define and clarify accountability**
- Metrics or a dashboard aligned to the *Framework* to **measure and monitor progress**
- Supporting **implementation to engage with the Framework** (e.g., *user guides and related resources*)

A photograph of a woman with long dark hair kissing a baby on the cheek. The baby is wearing a red and black plaid shirt and is smiling. The background is a soft-focus outdoor setting with trees and a building. A semi-transparent dark grey box is overlaid at the bottom of the image, containing the text.

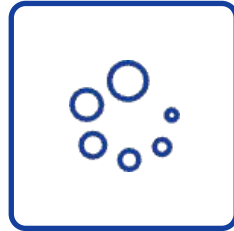
HEARING FROM YOU
REFLECTIONS

REFLECTION QUESTIONS

Based on what you have heard today, we are excited to hear from you all one last time before we work to finalize.



**Do these additional shifts
resonate?**



**Is there anything that
doesn't feel clear?**



**Any other input or feedback
before the Framework is
finalized?**

WHAT'S AHEAD



NEXT STEPS

- Incorporate feedback to finalize the revised Framework
- Draft communication materials to support sharing and dissemination
- Share a refreshed *Framework* in September

UPCOMING ENGAGEMENTS

- ECCLA (today!)
- Family Voice Council (7/17)
- CDEC Leadership (Early Aug)
- ECLC Co-Chairs (Early Aug)



Early Childhood Math Highlight: Working Together to Make Math Meaningful to Promote School Readiness and Life Success

Alvaro Arias, University of Denver and Kids Play Math and Lana Hansen, The Learning Carpet

University of Denver Kids Play Math in Partnership with The Learning Carpet

WORKING TOGETHER TO MAKE MATH MEANINGFUL TO
PROMOTE SCHOOL READINESS AND LIFE SUCCESS

ECLC Program Quality & Alignment Subcommittee
Meeting
July 14, 2023

Dr. Alvaro Arias, Chair, Dept. of Math, University of
Denver
Lana Hansen, PAEMST, The Learning Carpet, Inc.



WHY IS EARLY MATH IMPORTANT?

- Early math achievement upon entering Kindergarten is the best predictor of later school success, in both math and reading.
- A small investment in children's early math learning pays large dividends. It affects children for many years, improving educational outcomes.
- It's not very hard to make big improvements in early math. The past 25 years of research tells us how, but this information is rarely shared with teachers in ways that support knowing what to do to make a difference.
- Our professional development and materials are grounded in current research and align with national and state standards.



Experience Matters

Through a mixed delivery system we serve programs nationally, including Puerto Rico. We also provide international support in Canada. **We train teachers, assistants, coaches and coordinators in English and in Spanish.** We adapt our work to meet the needs of each organization we serve. Past clients include:

Head Start

Migrant Head Start

School Districts

Private Schools and Centers

Home-based Centers

Refugee Programs

*Our training and resources align with the new
HB-22-1205 Resource Bank Preschool Curriculum*



KIDS PLAY MATH

1

15+ YEARS OF TRAINING TEACHERS

1,000+ teachers and 500+ coaches including migrant, immigrant and refugees using bilingual training and resources

2

MULTIPLE GRANTS AWARDED

Head Start, Colorado Department of Education, and Toyota USA Foundation supported efforts to equip teachers and coaches with engaging, practical, easy to implement ideas to build sustainability

3

RESEARCH INTO ACTION

Blend key research using Guided Play to increase teacher knowledge and child outcomes in early mathematics. We mesh social emotional and academics to focus on the whole child



THE LEARNING CARPET

1

RESEARCH BASED GUIDED PLAY

Aligned to Head Start ELOF, Colorado Academic Standards, and GOLD Teaching Strategies to focus on critical content

2

TEACHER TESTED, STUDENT APPROVED

Informal assessments, games and routines enhance any curriculum. Multiple visuals and suggestions for individualization aid teachers to meet the needs of each child

3

30+ YEARS OF HELPING CHILDREN

27,000+ Learning Carpets sold in the US and Canada to help teachers help children PreK-5 build build social emotional skills as they engage with others to deeply understand foundational mathematics and literacy concepts





WE MAKE ANY INSTRUCTIONAL PLAN BETTER!



ALIGNED WITH
Colorado Academic Standards
Head Start Early Learning Outcomes Framework
Teaching Strategies GOLD

INCREASED
Instructional Support: Concept Development and Quality of Feedback in CLASS
Positive Attitudes from Teachers and Children
SUSTAINABILITY AND SCHOOL READINESS IS OUR GOAL!

Year One

**School Districts
Private Childcare
Head Start**

Basic Bilingual Plan

One day onsite math training for teachers, assistants and coaches in foundational math concepts in counting & cardinality and geometry

The Learning Carpet PreK Power Sets or individual materials available for integrating Guided Play.

Year One

**School Districts
Private Childcare
Head Start**

Comprehensive Bilingual Plan

One day onsite math training for teachers, assistants and coaches

Follow up coaching and online support to meet the needs of your site

The Learning Carpet PreK Power Sets or individual materials available at for integrating Guided Play.

Year One

Home Childcare

Home Bilingual Plan

Flexible online or in-person training in 3 hour time blocks

Flexible scheduling to provide individualized support

The Learning Carpet PreK Power Set resources and materials form the foundation for instruction using Guided Play

Basic Bilingual Plan

One day onsite math training for newly hired teachers, assistants and coaches to build consistent instructional culture

One day onsite math training for advanced users on assessment, individualization, and integration of math throughout the day

How to Help at Home resources to build parent partnerships

The Learning Carpet PreK Power Sets or individual materials available for integrating Guided Play

Year Two

School Districts
Private Childcare
Head Start

Comprehensive Bilingual Plan

One day onsite math training
for newly hired personnel to
build consistent culture

One day onsite math training for
advanced users on assessment,
individualization, and integration
of math throughout the day

Follow up coaching and online
support to meet the needs of
your site

How to Help at Home resources to
build parent partnerships

The Learning Carpet PreK Power
Sets or individual materials
available for integrating
Guided Play

Year Two

School Districts Private Childcare Head Start

Home Bilingual Plan

Flexible online or in-person training
in 3 hour time blocks on
assessment, individualization and
integration of math using
Guided Play

Flexible scheduling to provide
individualized support

How to Help at Home to build
parent partnerships

Year Two

Home Childcare

PRICING

ONSITE TRAINING

*Onsite training \$300/person
(Minimum of 15; discount for
large groups)*

*Additional travel expenses
may occur*

*Online Support and Follow Up
Coaching \$200/hour*

SITE SPECIFIC PRICING

HOME-BASED ONLINE

Online Course (\$250)

*The Learning Carpet PreK
Power Set (\$747.50)*

Online Support available

\$997.50 / PROVIDER

PRE-K POWER SET

*The Learning Carpet
PreK-2 Structure Cards
Super Shapes Set
Geo-Data Cards
Alphabet Cards
Giant Counters*

PreK Math Path Manual

\$747.50/ SET

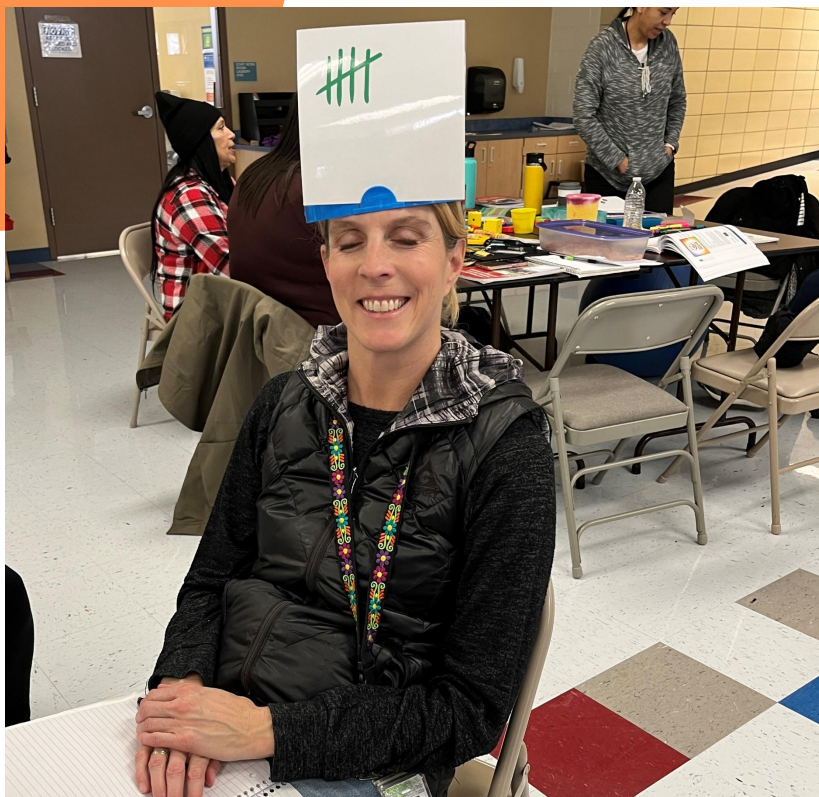
TESTIMONIALS

“I think instructionally being hands on and visual [helped me to] internalize it. Also being in groups and peer learning helps me to internalize this math training.”

Maria
Migrant Head Start Coach

“I didn’t know math had meaning growing up. I love how diverse the cards are; it’s just like how diverse our learners are. The world doesn’t look the same and math doesn’t look the same. What you have done is plan for different needs so each child can work to make meaning in the ways that work best for them.”

Andrea
Cherry Creek ECE Instructional Coach



CONTACT US

Jenny Lerner, Kids Play Math Volunteer

jenny@lerner-consulting.com

303-902-1955

Lana Hansen, The Learning Carpet

lane@thelearningcarpet.com

720-242-6412



Public Comment

ECLC

Early Childhood Leadership Commission

Program Quality & Alignment Subcommittee

Next Meeting:

September 8, 2023

9:00 - 11:00 am



Thank you!